

\$81,100 - 148 Northbend Drive, Wetaskiwin

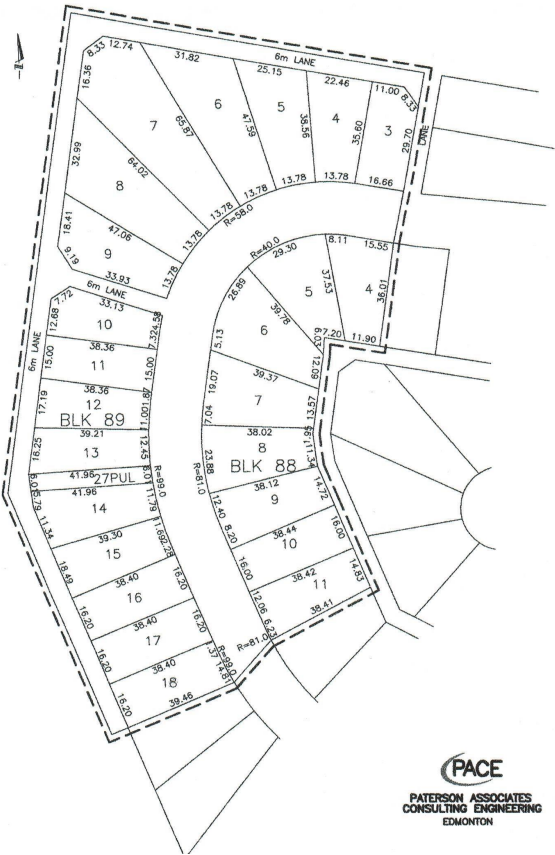
MLS® #E4275499

\$81,100

0 Bedroom, 0.00 Bathroom,
Single Family on 0.00 Acres

Northmount (Wetaskiwin), Wetaskiwin, AB

Build your dream home close to Wetaskiwin hospital, 70km from Edmonton, 40 minutes from the Edmonton International Airport, 30 minutes to Leduc and 2 minutes walking distance from the Hospital. Large lot, very well-planned subdivision, surrounded by paved walking/hiking path. Fantastic opportunity to build in one of Wetaskiwin's best subdivisions. Measuring 727 square meters, facing northwest, this lot is waiting for you. Please send your questions or interest to reza@dream2buy.ca



Essential Information

MLS® #	E4275499
Price	\$81,100
Bathrooms	0.00
Acres	0.00
Type	Single Family
Sub-Type	Vacant Lot/Land
Status	Active

Community Information

Address	148 Northbend Drive
Area	Wetaskiwin
Subdivision	Northmount (Wetaskiwin)
City	Wetaskiwin
County	ALBERTA

Province	AB
Postal Code	T9A 3N6

Exterior

Exterior Features Back Lane, Flat Site, Golf Nearby

Additional Information

Date Listed January 31st, 2022

Days on Market 1185

Zoning Zone 80

DATA IS DEEMED RELIABLE BUT IS NOT GUARANTEED ACCURATE BY THE REALTORS® ASSOCIATION OF EDMONTON. COPYRIGHT 2025 BY THE REALTORS® ASSOCIATION OF EDMONTON. ALL RIGHTS RESERVED.Trademarks are owned or controlled by the Canadian Real Estate Association (CREA) and identify real estate professionals who are members of CREA (REALTOR®, REALTORS®) and/or the quality of services they provide (MLS®, Multiple Listing Service®)

Listing information last updated on April 30th, 2025 at 2:47pm MDT