

\$269,000 - 7208 Highway 624, Rural Parkland County

MLS® #E4412651

\$269,000

2 Bedroom, 2.00 Bathroom, 1,445 sqft

Rural on 7.17 Acres

None, Rural Parkland County, AB

Located right off the pavement of Hwy 624 this 7.17 acre property is kept secluded with mature trees. This home measures 1445.28 sq/ft and is serviced with a drilled well, power, septic, and propane. Two out buildings are also on the property. Enjoy peaceful living just minutes from Drayton Valley. New Shingles on the home installed in 2025.

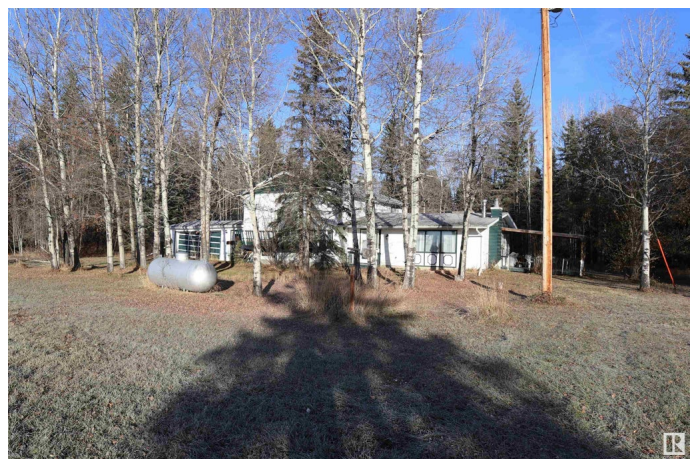
Built in 1973

Essential Information

MLS® #	E4412651
Price	\$269,000
Bedrooms	2
Bathrooms	2.00
Full Baths	2
Square Footage	1,445
Acres	7.17
Year Built	1973
Type	Rural
Sub-Type	Detached Single Family
Style	1 and Half Storey
Status	Active

Community Information

Address	7208 Highway 624
Area	Rural Parkland County



Subdivision	None
City	Rural Parkland County
County	ALBERTA
Province	AB
Postal Code	T7A 1S9

Amenities

Features	Deck, See Remarks
----------	-------------------

Interior

Heating	Forced Air-1, Propane
Stories	2
Has Basement	Yes
Basement	Partial, Partially Finished

Exterior

Exterior	Wood
Exterior Features	See Remarks
Construction	Wood
Foundation	See Remarks

Additional Information

Date Listed	November 4th, 2024
Days on Market	225
Zoning	Zone 90

DATA IS DEEMED RELIABLE BUT IS NOT GUARANTEED ACCURATE BY THE REALTORS® ASSOCIATION OF EDMONTON. COPYRIGHT 2025 BY THE REALTORS® ASSOCIATION OF EDMONTON. ALL RIGHTS RESERVED. Trademarks are owned or controlled by the Canadian Real Estate Association (CREA) and identify real estate professionals who are members of CREA (REALTOR®, REALTORS®) and/or the quality of services they provide (MLS®, Multiple Listing Service®)

Listing information last updated on June 16th, 2025 at 10:32pm MDT