

# \$580,000 - 3138 Magpie Way, Edmonton

MLS® #E4417809

**\$580,000**

4 Bedroom, 4.00 Bathroom, 1,815 sqft  
Single Family on 0.00 Acres

Starling, Edmonton, AB

Stunning 1815 sq. ft. single-family detached home in Starling South, Edmonton! This beautifully designed property features a main floor with a full bath, bedroom/den with En-suite, spacious living room, dining area, and modern kitchen. Upstairs, find a bonus room, 3 bedrooms and 2 full bathrooms, including a luxurious primary suite. private side entrance for potential legal basement suite. Current status: permits (2025-03-17)

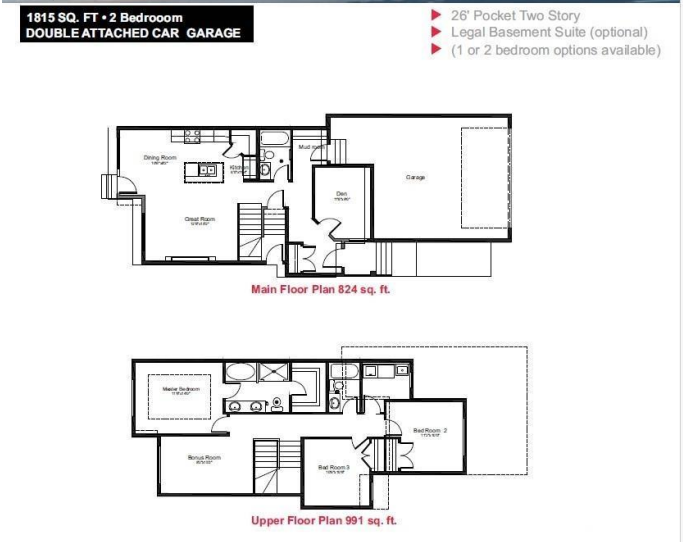
Built in 2025

## Essential Information

MLS® #	E4417809
Price	\$580,000
Bedrooms	4
Bathrooms	4.00
Full Baths	4
Square Footage	1,815
Acres	0.00
Year Built	2025
Type	Single Family
Sub-Type	Detached Single Family
Style	2 Storey
Status	Active

## Community Information

Address 3138 Magpie Way



Area	Edmonton
Subdivision	Starling
City	Edmonton
County	ALBERTA
Province	AB
Postal Code	T5S 0V4

### Amenities

Amenities	Ceiling 9 ft., Exterior Walls- 2"x6", 9 ft. Basement Ceiling
Parking Spaces	2
Parking	Double Garage Attached

### Interior

Interior Features	ensuite bathroom
Appliances	Builder Appliance Credit
Heating	Forced Air-1, Natural Gas
Fireplace	Yes
Fireplaces	Heatilator/Fan
Stories	2
Has Basement	Yes
Basement	Full, Unfinished

### Exterior

Exterior	Wood, Vinyl
Exterior Features	Back Lane, Golf Nearby, Playground Nearby, Ravine View
Roof	Asphalt Shingles
Construction	Wood, Vinyl
Foundation	Concrete Perimeter

### Additional Information

Date Listed	January 13th, 2025
Days on Market	107
Zoning	Zone 59

DATA IS DEEMED RELIABLE BUT IS NOT GUARANTEED ACCURATE BY THE REALTORS® ASSOCIATION OF EDMONTON. COPYRIGHT 2025 BY THE REALTORS® ASSOCIATION OF EDMONTON. ALL RIGHTS RESERVED. Trademarks are owned or controlled by the Canadian Real Estate Association (CREA) and identify real estate professionals who are members of CREA (REALTOR®, REALTORS®) and/or the quality of services they provide (MLS®, Multiple Listing Service®)

Listing information last updated on April 30th, 2025 at 3:47pm MDT