

\$199,900 - 21 53207 Hghway 31, Rural Parkland County

MLS® #E4424486

\$199,900

1 Bedroom, 1.00 Bathroom, 542 sqft

Rural on 0.09 Acres

The Meadows (Parkland), Rural Parkland County, AB

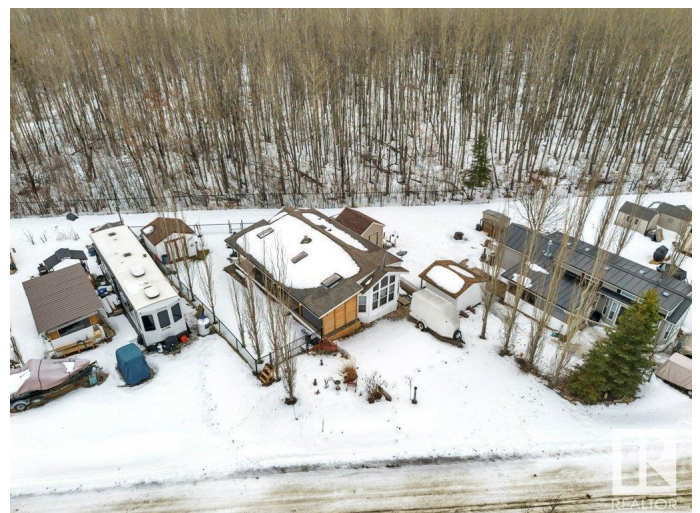
Your Dream Getaway Awaits!! Now's your chance to own a stunning, fully serviced 4-season park model in the gated community of The Meadows at Pineridge Golf Resort, just 45 minutes west of Edmonton and 2 minutes north of Seba Beach! This 1 bed & 1 bath 542 sq ft home boasts many features such as being fully fenced for privacy, municipal water, A/C, an electric fireplace and fully covered deck to enjoy those hot summer nights. PLUS amazing resort amenities including a rec center w/ gym & shower room, big screen TV, air hockey, ping pong, 12 hole golf course, tennis & pickleball courts, basketball, horseshoe pits, playgrounds and walking trails all just steps from your front door. This property offers a rare combination of comfort, recreation, and nature. With low taxes and affordable condo fees (bare land condo), youâ€™™ll be living the dream without the stress. Donâ€™™t miss out on this incredible opportunity to own your very own slice of paradise. Beat the rush and make this beautiful retreat your own!

Built in 2012

Essential Information

MLS® # E4424486

Price \$199,900



Bedrooms	1
Bathrooms	1.00
Full Baths	1
Square Footage	542
Acres	0.09
Year Built	2012
Type	Rural
Sub-Type	Detached Condominium
Style	Bungalow
Status	Active

Community Information

Address	21 53207 Hghway 31
Area	Rural Parkland County
Subdivision	The Meadows (Parkland)
City	Rural Parkland County
County	ALBERTA
Province	AB
Postal Code	T0E 2B0

Amenities

Features	Ceiling 9 ft., Deck, Fire Pit, No Smoking Home, Party Room, Racquet Courts, Vaulted Ceiling, Vinyl Windows
----------	--

Interior

Heating	Forced Air-1, Natural Gas
Stories	1
Has Basement	Yes
Basement	None, No Basement

Exterior

Exterior	Wood
Exterior Features	Backs Onto Park/Trees, Fenced, Golf Nearby, Landscaped, No Back Lane, No Through Road, Picnic Area, Playground Nearby
Construction	Wood
Foundation	Piling

Additional Information

Date Listed	March 7th, 2025
-------------	-----------------

Days on Market	55
Zoning	Zone 90
Condo Fee	\$163

DATA IS DEEMED RELIABLE BUT IS NOT GUARANTEED ACCURATE BY THE REALTORS® ASSOCIATION OF EDMONTON. COPYRIGHT 2025 BY THE REALTORS® ASSOCIATION OF EDMONTON. ALL RIGHTS RESERVED. Trademarks are owned or controlled by the Canadian Real Estate Association (CREA) and identify real estate professionals who are members of CREA (REALTOR®, REALTORS®) and/or the quality of services they provide (MLS®, Multiple Listing Service®)

Listing information last updated on April 30th, 2025 at 10:17pm MDT