

\$677,000 - 8307 Saskatchewan Drive, Edmonton

MLS® #E4425274

\$677,000

0 Bedroom, 0.00 Bathroom,
Single Family on 0.00 Acres

Windsor Park (Edmonton), Edmonton, AB

PRICE REDUCTION OF \$100,000
AVAILABLE ONLY UNTIL APRIL 30, 2025!
Please price-compare:Â 625 sq.m., 6726 sq.ft., 50-foot front, 38-foot lane way access.Â Build a 38 ft. wide 3-storey home and a triple garage. Best Southwest sunset view on Saskatchewan Drive.Â Because you are directly across from "Irene's Lookout" you see the whole River Valley from your new second and third floors.Â Serviced lot is cleared and flat - no demolition required. Motivated seller.

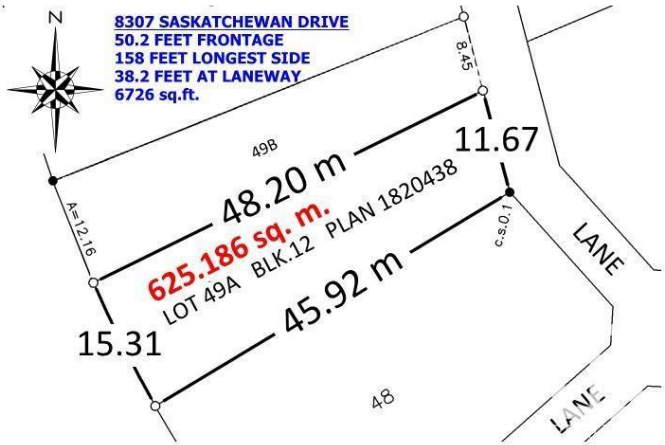


Essential Information

MLS® #	E4425274
Price	\$677,000
Bathrooms	0.00
Acres	0.00
Type	Single Family
Sub-Type	Vacant Lot/Land
Status	Active

Community Information

Address	8307 Saskatchewan Drive
Area	Edmonton
Subdivision	Windsor Park (Edmonton)
City	Edmonton
County	ALBERTA



Province	AB
Postal Code	T6G 2A7

Exterior

Exterior Features	Flat Site, Level Land, Ravine View, River Valley View, River View, Subdividable Lot, Treed Lot, See Remarks
-------------------	---

Additional Information

Date Listed	March 12th, 2025
-------------	------------------

Days on Market	50
----------------	----

Zoning	Zone 15
--------	---------

DATA IS DEEMED RELIABLE BUT IS NOT GUARANTEED ACCURATE BY THE REALTORS® ASSOCIATION OF EDMONTON. COPYRIGHT 2025 BY THE REALTORS® ASSOCIATION OF EDMONTON. ALL RIGHTS RESERVED. Trademarks are owned or controlled by the Canadian Real Estate Association (CREA) and identify real estate professionals who are members of CREA (REALTOR®, REALTORS®) and/or the quality of services they provide (MLS®, Multiple Listing Service®)

Listing information last updated on May 1st, 2025 at 1:47am MDT