

\$620,000

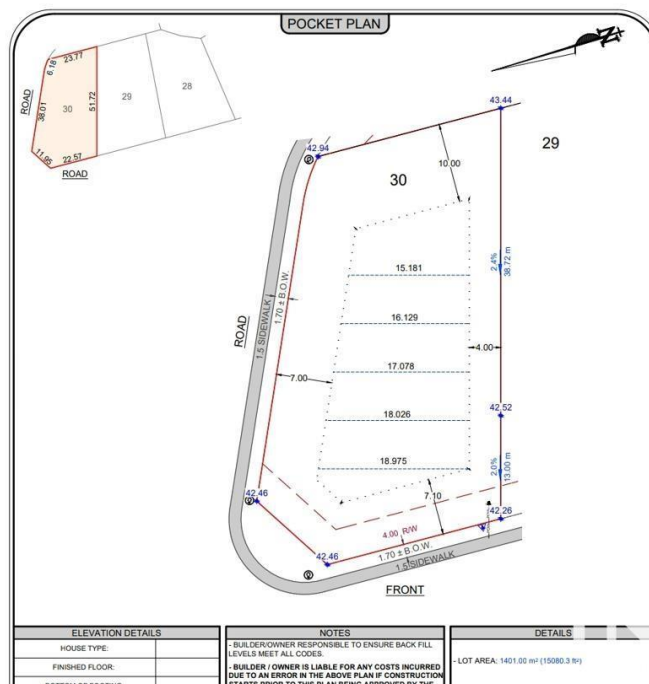
Sherwood Golf & Country Club Estates, Rural
Strathcona County, AB

Essential Information

| | |
|-----------|-----------------|
| MLS® # | E4426726 |
| Price | \$620,000 |
| Bathrooms | 0.00 |
| Acres | 0.35 |
| Type | Rural |
| Sub-Type | Vacant Lot/Land |
| Status | Active |

Community Information

Address 52327 Range Road 233



| | |
|-------------|--------------------------------------|
| Area | Rural Strathcona County |
| Subdivision | Sherwood Golf & Country Club Estates |
| City | Rural Strathcona County |
| County | ALBERTA |
| Province | AB |
| Postal Code | T8B 1C7 |

Exterior

Exterior Features Corner Lot, Flat Site, Golf Nearby, Paved Lane, Schools, Shopping Nearby

Additional Information

Date Listed March 20th, 2025

Days on Market 88

Zoning Zone 80

DATA IS DEEMED RELIABLE BUT IS NOT GUARANTEED ACCURATE BY THE REALTORS® ASSOCIATION OF EDMONTON. COPYRIGHT 2025 BY THE REALTORS® ASSOCIATION OF EDMONTON. ALL RIGHTS RESERVED. Trademarks are owned or controlled by the Canadian Real Estate Association (CREA) and identify real estate professionals who are members of CREA (REALTOR®, REALTORS®) and/or the quality of services they provide (MLS®, Multiple Listing Service®)

Listing information last updated on June 16th, 2025 at 5:02pm MDT