

\$6,640,000 - 24536 Twp Road 500, Rural Leduc County

MLS® #E4427525

\$6,640,000

0 Bedroom, 0.00 Bathroom,
Rural on 80.00 Acres

None, Rural Leduc County, AB

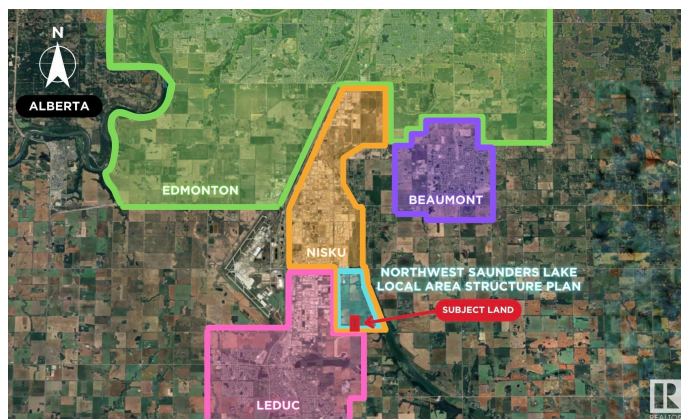
80 Acres. Located in the Northwest Saunders Lake Local Area Structure Plan (LASP). Great proximity to water pipeline, 240V Transmission Lines and three (3) phase power. Artificial Intelligence, Datacentre, Crypto Mining potential with possible access to nearby transmission lines. Located south of Nisku Business Park Five minute drive to Edmonton International Airport, and adjacent to Leduc city limits. Municipality: Leduc County, Alberta, Short Legal: 4,24,50,6 SE: Zoning: AG (Agriculture). Selling land value only. Buyer's to confirm information during their due diligence.

Essential Information

MLS® #	E4427525
Price	\$6,640,000
Bathrooms	0.00
Acres	80.00
Type	Rural
Sub-Type	Vacant Lot/Land
Status	Active

Community Information

Address	24536 Twp Road 500
Area	Rural Leduc County
Subdivision	None



City	Rural Leduc County
County	ALBERTA
Province	AB
Postal Code	T4X 0N8

Exterior

Exterior Features See Remarks

Additional Information

Date Listed	March 26th, 2025
Days on Market	128
Zoning	Zone 80

DATA IS DEEMED RELIABLE BUT IS NOT GUARANTEED ACCURATE BY THE REALTORS® ASSOCIATION OF EDMONTON. COPYRIGHT 2025 BY THE REALTORS® ASSOCIATION OF EDMONTON. ALL RIGHTS RESERVED. Trademarks are owned or controlled by the Canadian Real Estate Association (CREA) and identify real estate professionals who are members of CREA (REALTOR®, REALTORS®) and/or the quality of services they provide (MLS®, Multiple Listing Service®)

Listing information last updated on August 1st, 2025 at 2:47am MDT