

Courtesy Of John Rota Of Sweetly

\$675,000 - 49 Gladstone Bend, Spruce Grove

MLS® #E4427696

\$675,000

3 Bedroom, 2.50 Bathroom, 2,241 sqft

Single Family on 0.00 Acres

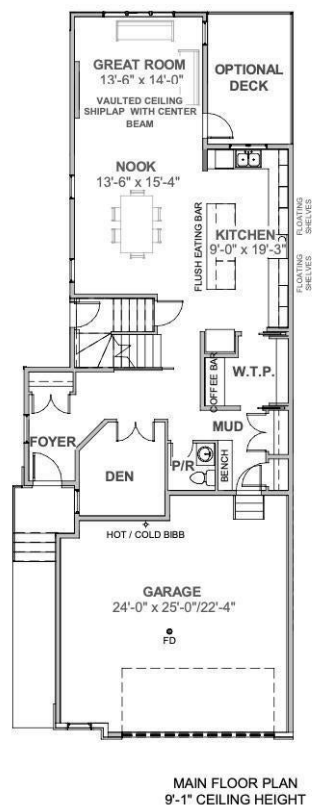
Greenbury, Spruce Grove, AB

Step into this stunning two-storey home in Greenbury, Spruce Grove. The main floor offers a welcoming living room, a dining room, a stylish kitchen, a mudroom, a den, a convenient 2-piece bathroom, and the option to add a deck for outdoor enjoyment. The upper floor boasts a spacious bonus room, a primary bedroom with a walk-in closet and a luxurious 5-piece ensuite, two additional bedrooms, a laundry room, and a 4-piece bathroom. This home also includes an attached double garage, offering ample parking and storage. This home combines style and practicality for your ideal lifestyle.

Built in 2025

Essential Information

| | |
|----------------|------------------------|
| MLS® # | E4427696 |
| Price | \$675,000 |
| Bedrooms | 3 |
| Bathrooms | 2.50 |
| Full Baths | 2 |
| Half Baths | 1 |
| Square Footage | 2,241 |
| Acres | 0.00 |
| Year Built | 2025 |
| Type | Single Family |
| Sub-Type | Detached Single Family |



| | |
|--------|----------|
| Style | 2 Storey |
| Status | Active |

Community Information

| | |
|-------------|-------------------|
| Address | 49 Gladstone Bend |
| Area | Spruce Grove |
| Subdivision | Greenbury |
| City | Spruce Grove |
| County | ALBERTA |
| Province | AB |
| Postal Code | T7X 0Z6 |

Amenities

| | |
|-----------|--------------------------------------------------|
| Amenities | Detectors Smoke, No Animal Home, No Smoking Home |
| Parking | Double Garage Attached |

Interior

| | |
|-------------------|---------------------------|
| Interior Features | ensuite bathroom |
| Appliances | See Remarks |
| Heating | Forced Air-1, Natural Gas |
| Stories | 2 |
| Has Basement | Yes |
| Basement | Full, Unfinished |

Exterior

| | |
|-------------------|--------------------------------------------------------------------|
| Exterior | Wood, Vinyl |
| Exterior Features | Playground Nearby, Public Transportation, Schools, Shopping Nearby |
| Roof | Asphalt Shingles |
| Construction | Wood, Vinyl |
| Foundation | Concrete Perimeter |

Additional Information

| | |
|----------------|------------------|
| Date Listed | March 27th, 2025 |
| Days on Market | 35 |
| Zoning | Zone 91 |

DATA IS DEEMED RELIABLE BUT IS NOT GUARANTEED ACCURATE BY THE REALTORS® ASSOCIATION OF EDMONTON. COPYRIGHT 2025 BY THE REALTORS® ASSOCIATION OF EDMONTON. ALL RIGHTS RESERVED. Trademarks are owned or controlled by the Canadian Real Estate Association (CREA) and identify real estate professionals who are members of CREA (REALTOR®, REALTORS®) and/or the quality of services they provide (MLS®, Multiple Listing Service®)

Listing information last updated on April 30th, 2025 at 11:32pm MDT