

\$499,000 - 9122 Pear Drive, Edmonton

MLS® #E4430307

\$499,000

4 Bedroom, 2.50 Bathroom, 1,643 sqft

Single Family on 0.00 Acres

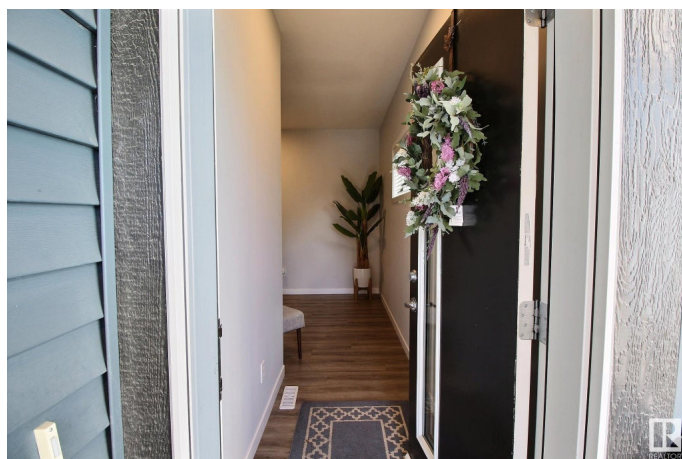
The Orchards At Ellerslie, Edmonton, AB

Welcome to this four-bedroom south facing gem in The Orchards! This spacious home offers 2.5 bathrooms, a double attached garage, and is fully fenced with a generous deckâ€”perfect for outdoor living. Inside, youâ€™ll find modern finishings throughout, including sleek grey kitchen cabinets, stainless steel appliances, and white quartz countertops. A standout feature is the four-bedroom layout all on the second floorâ€”a unique and hard-to-find option as well as laundry conveniently located down the hall. The primary suite features a spacious 3 piece ensuite with it's own walk-in closet for added comfort and storage. The basement is unspoiled, giving you the opportunity to add an extra bedroom or additional sitting space. Located in a family-friendly neighborhood, The Orchards offers access to parks, playgrounds, schools, and a welcoming community vibe. With its stylish design, functional layout, and room to grow, this home checks all the boxes!

Built in 2019

Essential Information

MLS® #	E4430307
Price	\$499,000
Bedrooms	4
Bathrooms	2.50



Full Baths	2
Half Baths	1
Square Footage	1,643
Acres	0.00
Year Built	2019
Type	Single Family
Sub-Type	Half Duplex
Style	2 Storey
Status	Active

Community Information

Address	9122 Pear Drive
Area	Edmonton
Subdivision	The Orchards At Ellerslie
City	Edmonton
County	ALBERTA
Province	AB
Postal Code	T6X 2N7

Amenities

Amenities	Ceiling 9 ft., Deck, No Animal Home, See Remarks
Parking	Double Garage Attached

Interior

Interior Features	ensuite bathroom
Appliances	Dishwasher-Built-In, Dryer, Microwave Hood Fan, Refrigerator, Stove-Electric, Washer, Window Coverings
Heating	Forced Air-2, Natural Gas
Stories	2
Has Basement	Yes
Basement	Full, Unfinished

Exterior

Exterior	Wood, Vinyl
Exterior Features	Fenced, Landscaped, Playground Nearby, Schools, See Remarks
Roof	Asphalt Shingles
Construction	Wood, Vinyl
Foundation	Concrete Perimeter

Additional Information

Date Listed April 11th, 2025

Days on Market 22

Zoning Zone 53

DATA IS DEEMED RELIABLE BUT IS NOT GUARANTEED ACCURATE BY THE REALTORS® ASSOCIATION OF EDMONTON. COPYRIGHT 2025 BY THE REALTORS® ASSOCIATION OF EDMONTON. ALL RIGHTS RESERVED. Trademarks are owned or controlled by the Canadian Real Estate Association (CREA) and identify real estate professionals who are members of CREA (REALTOR®, REALTORS®) and/or the quality of services they provide (MLS®, Multiple Listing Service®)

Listing information last updated on May 3rd, 2025 at 9:02pm MDT