

Courtesy Of Adrienne Carlton Of Exp Realty

\$925,000 - 53510 Range Road 20, Rural Lac Ste. Anne County

MLS® #E4430577

\$925,000

3 Bedroom, 3.00 Bathroom, 5,262 sqft
Rural on 7.00 Acres

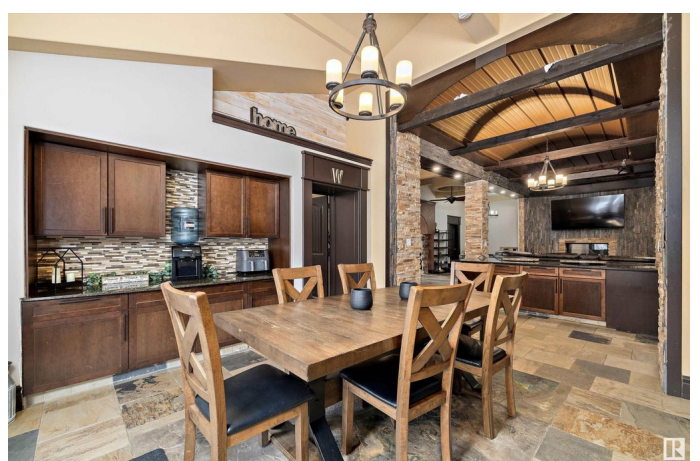
None, Rural Lac Ste. Anne County, AB

Welcome to your country dream, a timber frame bardominium,with over 5000 sq ft, on 7 acres, with an 8300 sq ft shop! Enter through the stone arch & stamped concrete elevated path. Below, detailed tile work & set up for a koi fish pond. The main floor boasts a 25' high entrance with 12' timber frame trusses, custom stonework, slate floors & stairs. The entire main floor has in-floor heat with 4 zones, 3 bdrms, one of them is complete with a walk-in closet, 4 pc ensuite with a round jacuzzi tub. Open concept entertainment area with large living room, double-sided fireplace, kitchen with huge granite island, custom 8ft high cabinets an 12'ceilings. Games room with wet bar attached. 2 additional bonus rooms, laundry and 5 pc bath also on main. Retreat to your 1100 sqft primary bdrm with 2 W/I closets, 5 pc ensuite including elevated jacuzzi tub, & its own laundry! Home has attached double tandem garage on one side, single on the other. Shop offers heated workspace w/tons of room for your toys or business!

Built in 1997

Essential Information

MLS® #	E4430577
Price	\$925,000



Bedrooms	3
Bathrooms	3.00
Full Baths	3
Square Footage	5,262
Acres	7.00
Year Built	1997
Type	Rural
Sub-Type	Detached Single Family
Style	2 Storey
Status	Active

Community Information

Address	53510 Range Road 20
Area	Rural Lac Ste. Anne County
Subdivision	None
City	Rural Lac Ste. Anne County
County	ALBERTA
Province	AB
Postal Code	T0E 2P0

Amenities

Features	Air Conditioner, Bar, Closet Organizers, Deck, Detectors Smoke, Fire Pit, Gazebo, Guest Suite, Hot Tub, Insulation-Upgraded, Wet Bar, Workshop
----------	--

Interior

Interior Features	ensuite bathroom
Heating	In Floor Heat System, Natural Gas
Stories	2
Has Basement	Yes
Basement	None, No Basement

Exterior

Exterior	Wood
Exterior Features	Backs Onto Park/Trees, Fenced, Landscaped, Private Setting, Treed Lot
Construction	Wood
Foundation	Piling

Additional Information

Date Listed April 11th, 2025

Days on Market 66

Zoning Zone 90

DATA IS DEEMED RELIABLE BUT IS NOT GUARANTEED ACCURATE BY THE REALTORS® ASSOCIATION OF EDMONTON. COPYRIGHT 2025 BY THE REALTORS® ASSOCIATION OF EDMONTON. ALL RIGHTS RESERVED. Trademarks are owned or controlled by the Canadian Real Estate Association (CREA) and identify real estate professionals who are members of CREA (REALTOR®, REALTORS®) and/or the quality of services they provide (MLS®, Multiple Listing Service®)

Listing information last updated on June 16th, 2025 at 12:02pm MDT