

\$319,900 - 8410 156 Avenue, Edmonton

MLS® #E4432012

\$319,900

3 Bedroom, 1.50 Bathroom, 1,001 sqft

Single Family on 0.00 Acres

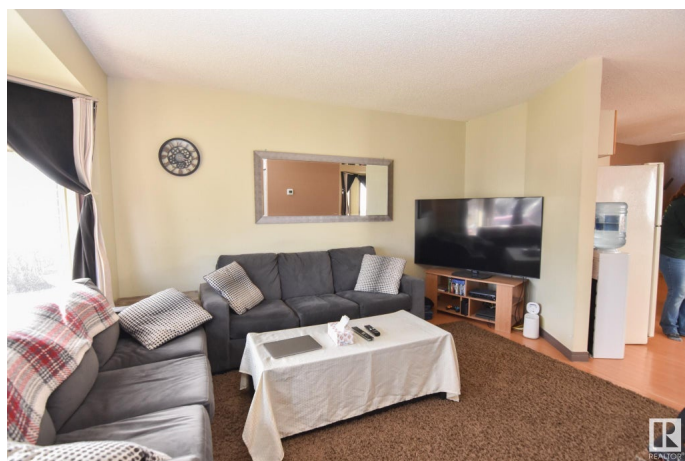
Belle Rive, Edmonton, AB

Great starter home for the first time buyer family! Cute 4 level split home is developed on three levels. Front living room with large southeast facing bay windows. Open style kitchen with a center island and dinette area. Upper level with a large primary bedroom plus 2nd bedroom along with the 4 piece bathroom/ensuite access. Third level features a large family room with a wood burning fireplace, a 3rd bedroom and a 2-piece bathroom. Basement is partially finished as a recreation space with a pool table (included) and padded flooring for your comfort. Tons of storage space. Laundry area in lower level as well. The yard is fully fenced and there is 2 parking stalls out back. Freshly painted inside. Furnace and HWT both new in 2019. Future potential for a detached garage with alley access. This property is a great option for any first time home buyer who wants no condo fees!

Built in 1986

Essential Information

MLS® #	E4432012
Price	\$319,900
Bedrooms	3
Bathrooms	1.50
Full Baths	1



Half Baths	1
Square Footage	1,001
Acres	0.00
Year Built	1986
Type	Single Family
Sub-Type	Detached Single Family
Style	4 Level Split
Status	Active

Community Information

Address	8410 156 Avenue
Area	Edmonton
Subdivision	Belle Rive
City	Edmonton
County	ALBERTA
Province	AB
Postal Code	T5Z 2N7

Amenities

Amenities	No Animal Home, No Smoking Home
Parking	2 Outdoor Stalls

Interior

Interior Features	ensuite bathroom
Appliances	Dishwasher-Built-In, Dryer, Hood Fan, Refrigerator, Storage Shed, Stove-Electric, Washer, Window Coverings, See Remarks
Heating	Forced Air-1, Natural Gas
Stories	3
Has Basement	Yes
Basement	Full, Partially Finished

Exterior

Exterior	Wood, Metal, Vinyl
Exterior Features	Back Lane, Fenced, Playground Nearby, Public Transportation, Schools, Shopping Nearby
Roof	Asphalt Shingles
Construction	Wood, Metal, Vinyl
Foundation	Concrete Perimeter

School Information

Elementary	FLORENCE HALL./ST PHILLIP
Middle	FLORENCE HALL./CARDINL LEG
High	QUEEN ELIZ./ARCH O'LEARY

Additional Information

Date Listed April 22nd, 2025

Days on Market 8

Zoning Zone 28

DATA IS DEEMED RELIABLE BUT IS NOT GUARANTEED ACCURATE BY THE REALTORS® ASSOCIATION OF EDMONTON. COPYRIGHT 2025 BY THE REALTORS® ASSOCIATION OF EDMONTON. ALL RIGHTS RESERVED.Trademarks are owned or controlled by the Canadian Real Estate Association (CREA) and identify real estate professionals who are members of CREA (REALTOR®, REALTORS®) and/or the quality of services they provide (MLS®, Multiple Listing Service®)

Listing information last updated on April 30th, 2025 at 8:17pm MDT