

\$239,900 - 511 75 Gervais Road, St. Albert

MLS® #E4433235

\$239,900

2 Bedroom, 2.00 Bathroom, 1,025 sqft

Condo / Townhouse on 0.00 Acres

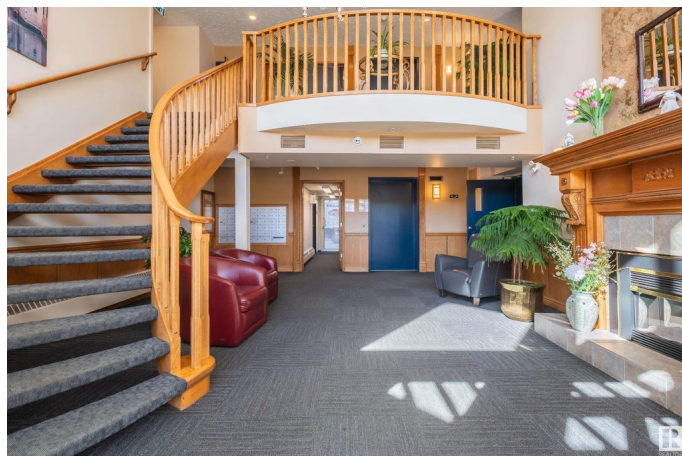
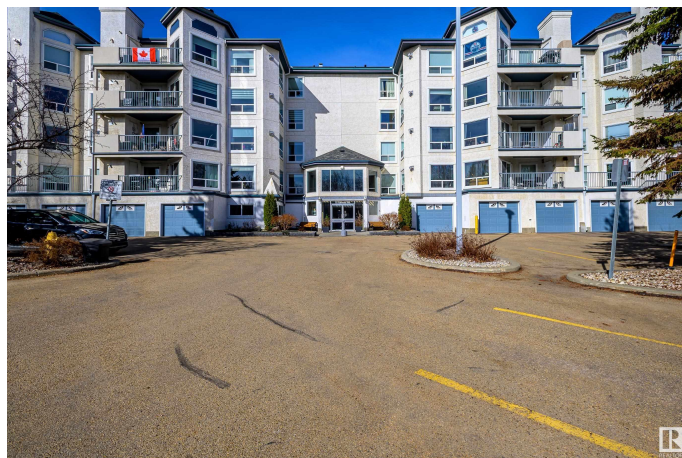
Grandin, St. Albert, AB

Welcome to the top floor of The Greenbrier in St. Albert. Vaulted ceilings and an abundance of natural light greet you at the door of this 2 bedroom and 2 bathroom bright west facing unit. Feature fireplace in the living room and open concept kitchen with plenty of cupboard and counterspace. Private west facing deck, central air conditioning and in suite laundry. This 18 + building is very clean and very well maintained with a full exercise room, guest suite and a recreational room. Close to all amenities, transportation and walking trails. Welcome Home.

Built in 1997

Essential Information

| | |
|----------------|------------------------|
| MLS® # | E4433235 |
| Price | \$239,900 |
| Bedrooms | 2 |
| Bathrooms | 2.00 |
| Full Baths | 2 |
| Square Footage | 1,025 |
| Acres | 0.00 |
| Year Built | 1997 |
| Type | Condo / Townhouse |
| Sub-Type | Lowrise Apartment |
| Style | Single Level Apartment |
| Status | Active |



Community Information

| | |
|-------------|---------------------|
| Address | 511 75 Gervais Road |
| Area | St. Albert |
| Subdivision | Grandin |
| City | St. Albert |
| County | ALBERTA |
| Province | AB |
| Postal Code | T8N 6N2 |

Amenities

| | |
|-----------|--|
| Amenities | Air Conditioner, Exercise Room, Guest Suite, No Animal Home, No Smoking Home, Parking-Visitor, Recreation Room/Centre, Security Door, Natural Gas BBQ Hookup |
| Parking | Stall |

Interior

| | |
|-------------------|---|
| Interior Features | ensuite bathroom |
| Appliances | Air Conditioning-Central, Dryer, Microwave Hood Fan, Refrigerator, Stove-Electric, Washer |
| Heating | Forced Air-1, Natural Gas |
| Fireplace | Yes |
| Fireplaces | Corner |
| # of Stories | 5 |
| Stories | 1 |
| Has Basement | Yes |
| Basement | None, No Basement |

Exterior

| | |
|-------------------|---|
| Exterior | Wood, Stucco |
| Exterior Features | Backs Onto Park/Trees, Flat Site, Landscaped, Park/Reserve, Public Transportation, Shopping Nearby, View City |
| Roof | Asphalt Shingles |
| Construction | Wood, Stucco |
| Foundation | Concrete Perimeter |

Additional Information

| | |
|----------------|------------------|
| Date Listed | April 28th, 2025 |
| Days on Market | 2 |
| Zoning | Zone 24 |
| Condo Fee | \$721 |

DATA IS DEEMED RELIABLE BUT IS NOT GUARANTEED ACCURATE BY THE REALTORS® ASSOCIATION OF EDMONTON. COPYRIGHT 2025 BY THE REALTORS® ASSOCIATION OF EDMONTON. ALL RIGHTS RESERVED.Trademarks are owned or controlled by the Canadian Real Estate Association (CREA) and identify real estate professionals who are members of CREA (REALTOR®, REALTORS®) and/or the quality of services they provide (MLS®, Multiple Listing Service®)

Listing information last updated on April 30th, 2025 at 11:02am MDT