

\$549,900 - 4708 164 Avenue, Edmonton

MLS® #E4434539

\$549,900

4 Bedroom, 3.00 Bathroom, 1,646 sqft

Single Family on 0.00 Acres

Brintnell, Edmonton, AB

Stunning property, fantastic layout! Beautifully maintained, original owner home offering style, comfort, and functionality throughout. The main floor features a bright, updated kitchen with quartz countertops, quality tile backsplash, oak cabinetry, walk-in pantry, and a spacious island—perfect for cooking and entertaining. An abundance of windows fills the open-concept living and dining areas with natural light. On the main floor and upper level you will find 3 spacious bedrooms that are a rarity. The fully finished basement is ideal for relaxing or entertaining, featuring a large family/rec room with French doors, wet bar, additional bedroom, full bathroom, and wiring for multiple TVs—ready for your media setup. Enjoy year-round comfort with central A/C and a newer hot water tank (2021). Outside, a two-tiered deck overlooks the fenced backyard—perfect for family gatherings or quiet evenings. Impeccably cared for, this property is a move-in ready gem in a desirable location!

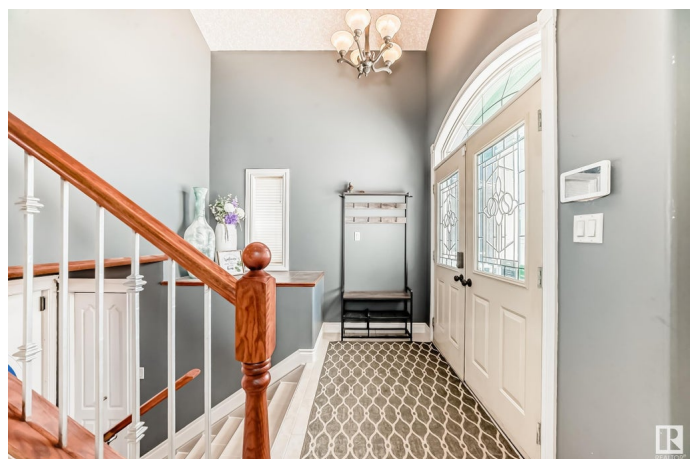
Built in 2006

Essential Information

MLS® # E4434539

Price \$549,900

Bedrooms 4



Bathrooms	3.00
Full Baths	3
Square Footage	1,646
Acres	0.00
Year Built	2006
Type	Single Family
Sub-Type	Detached Single Family
Style	Bi-Level
Status	Active

Community Information

Address	4708 164 Avenue
Area	Edmonton
Subdivision	Brintnell
City	Edmonton
County	ALBERTA
Province	AB
Postal Code	T5Y 0A5

Amenities

Amenities	Air Conditioner, Deck, Front Porch, Hot Tub, No Smoking Home, Vaulted Ceiling
Parking	Double Garage Attached

Interior

Interior Features	ensuite bathroom
Appliances	Dishwasher-Built-In, Dryer, Refrigerator, Storage Shed, Stove-Electric, Washer, Window Coverings, TV Wall Mount, Hot Tub
Heating	Forced Air-1, Natural Gas
Fireplace	Yes
Fireplaces	Mantel
Stories	3
Has Basement	Yes
Basement	Full, Finished

Exterior

Exterior	Wood, Vinyl
Exterior Features	Fenced, Landscaped, Public Transportation
Roof	Asphalt Shingles

Construction	Wood, Vinyl
Foundation	Concrete Perimeter

Additional Information

Date Listed	May 5th, 2025
Days on Market	43
Zoning	Zone 03

DATA IS DEEMED RELIABLE BUT IS NOT GUARANTEED ACCURATE BY THE REALTORS® ASSOCIATION OF EDMONTON. COPYRIGHT 2025 BY THE REALTORS® ASSOCIATION OF EDMONTON. ALL RIGHTS RESERVED.Trademarks are owned or controlled by the Canadian Real Estate Association (CREA) and identify real estate professionals who are members of CREA (REALTOR®, REALTORS®) and/or the quality of services they provide (MLS®, Multiple Listing Service®)

Listing information last updated on June 17th, 2025 at 5:17pm MDT