

\$474,900 - N/A, Spruce Grove

MLS® #E4436606

\$474,900

3 Bedroom, 2.50 Bathroom, 1,528 sqft

Single Family on 0.00 Acres

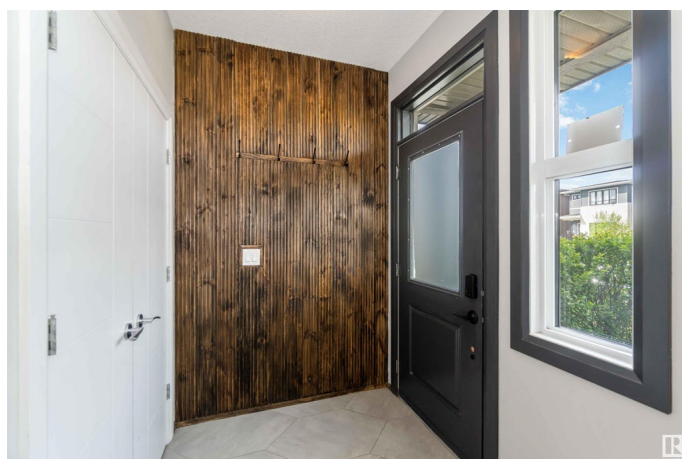
Kenton, Spruce Grove, AB

Discover your next home in the sought-after community of Kenton! This beautifully updated 2-storey is ideally located just 20 minutes from West Edmonton Mall with quick access to Hwy 16. Enjoy being near Jubilee Park, the new Kâ€9 Prescott Learning Centre, and the future Civic Centreâ€”bringing added entertainment and value to the area. You're also steps from the new arena at Heavy Metal Place. Inside, a stylish open-concept layout features hand-scraped hardwood, porcelain tile, and renovated bathrooms. The main floor is enhanced by custom design touches that create a warm, modern feel. Upstairs offers three spacious bedrooms, including a large primary suite with a private 3-piece ensuite. Step outside to a backyard oasis with stamped concrete patio and walkwayâ€”ideal for relaxing or entertaining. Car lovers will appreciate the custom oversized garage built to fit a lifted truck. This move-in ready home blends comfort, location, and lifestyle!

Built in 2014

Essential Information

MLS® #	E4436606
Price	\$474,900
Bedrooms	3
Bathrooms	2.50



Full Baths	2
Half Baths	1
Square Footage	1,528
Acres	0.00
Year Built	2014
Type	Single Family
Sub-Type	Detached Single Family
Style	2 Storey
Status	Active

Community Information

Address	N/A
Area	Spruce Grove
Subdivision	Kenton
City	Spruce Grove
County	ALBERTA
Province	AB
Postal Code	T7X 0P7

Amenities

Amenities	See Remarks
Parking	Double Garage Detached, Over Sized

Interior

Interior Features	ensuite bathroom
Appliances	Dishwasher-Built-In, Dryer, Microwave Hood Fan, Refrigerator, Stove-Electric, Window Coverings, Washers-Two
Heating	Forced Air-1, Natural Gas
Fireplace	Yes
Fireplaces	Tile Surround
Stories	2
Has Basement	Yes
Basement	Full, Partially Finished

Exterior

Exterior	Wood, Vinyl
Exterior Features	See Remarks
Roof	Asphalt Shingles
Construction	Wood, Vinyl

Foundation Concrete Perimeter

Additional Information

Date Listed May 14th, 2025

Days on Market 20

Zoning Zone 91

DATA IS DEEMED RELIABLE BUT IS NOT GUARANTEED ACCURATE BY THE REALTORS® ASSOCIATION OF EDMONTON. COPYRIGHT 2025 BY THE REALTORS® ASSOCIATION OF EDMONTON. ALL RIGHTS RESERVED.Trademarks are owned or controlled by the Canadian Real Estate Association (CREA) and identify real estate professionals who are members of CREA (REALTOR®, REALTORS®) and/or the quality of services they provide (MLS®, Multiple Listing Service®)

Listing information last updated on June 3rd, 2025 at 4:32am MDT