

\$40,000 - 4520 50 Avenue, Warburg

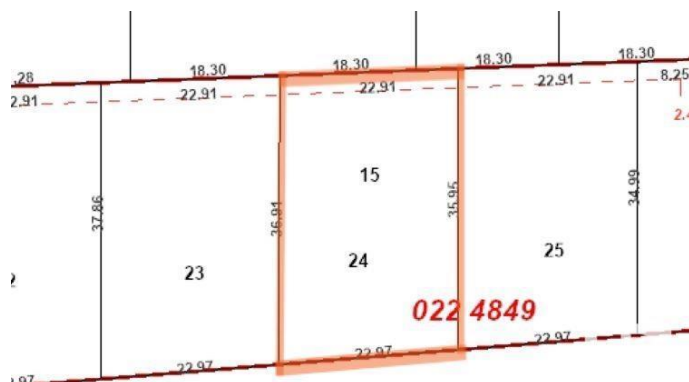
MLS® #E4437272

\$40,000

0 Bedroom, 0.00 Bathroom,
Single Family on 0.00 Acres

Warburg, Warburg, AB

Lot 24 is a large 75'x121' residential vacant lot in a newer subdivision. New paved road and sidewalks in place and municipal services at property line. The Village of Warburg is centrally located about thirty minutes from Leduc, Drayton Valley, Stony Plain, Nisku and the Edmonton International Airport and 15 minutes from Pigeon Lake and Genesee Power Plant. A wonderful community to call home!



Essential Information

| | |
|-----------|-----------------|
| MLS® # | E4437272 |
| Price | \$40,000 |
| Bathrooms | 0.00 |
| Acres | 0.00 |
| Type | Single Family |
| Sub-Type | Vacant Lot/Land |
| Status | Active |

Community Information

| | |
|-------------|----------------|
| Address | 4520 50 Avenue |
| Area | Warburg |
| Subdivision | Warburg |
| City | Warburg |
| County | ALBERTA |
| Province | AB |
| Postal Code | T0C 2T0 |

Exterior

Exterior Features Flat Site, Schools

Additional Information

Date Listed May 17th, 2025

Days on Market 114

Zoning Zone 90

DATA IS DEEMED RELIABLE BUT IS NOT GUARANTEED ACCURATE BY THE REALTORS® ASSOCIATION OF EDMONTON. COPYRIGHT 2025 BY THE REALTORS® ASSOCIATION OF EDMONTON. ALL RIGHTS RESERVED.Trademarks are owned or controlled by the Canadian Real Estate Association (CREA) and identify real estate professionals who are members of CREA (REALTOR®, REALTORS®) and/or the quality of services they provide (MLS®, Multiple Listing Service®)

Listing information last updated on September 7th, 2025 at 11:02pm MDT