

\$729,000 - 53220 Rge Road 15, Rural Parkland County

MLS® #E4437425

\$729,000

4 Bedroom, 3.50 Bathroom, 1,652 sqft

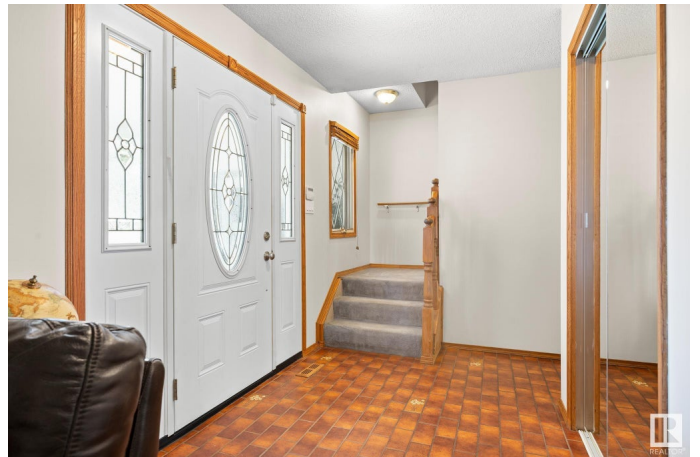
Rural on 2.82 Acres

Ashwood Meadows, Rural Parkland County,
AB

Private Scenic Country Acreage 5 Min West of
Stony Plain Set up as a Small Hobby Farm!

Finished 2 Storey W/Walk Out Basement

Features: 4 Bedrooms, 3.5 Baths, Many Lg
Windows, Lg Kitchen W/Granit Countertops,
New SS Appliances, Fresh Paint, Spacious
Entry, Sun Room, Lg Living Rm W/Bay
Window, & Wood Fireplace. Upstairs: Primary
Suite W/3PC Bath & Walk in Closet, 4pc Bath,
& 3 More Lg Bedrooms, Basement: Lg Rec
Rm W/Fireplace, 3pc Bath, Cold Rm, Lg
Laundry/Utility Rm W/Sink, & Door to Outdoor
Patio. Beautifully Landscaped Yard W/Dbl Att
Garage, 40x23 Shop W/220V, Hoist, &
Cement Floor, Barn W/Cement Floor, 3
Chicken Houses, Feed Mill, Greenhouse
W/Canning Kitchen, Outdoor BBQ Area
W/Sink, Garden Area, Fire Pit, Smoker, Wood
Shed, Fruit Trees, Separate Fenced Areas,
Many Lg Trees For Privacy, Huge Deck
Partially Covered, Patio, Gigantic Cement
Driveway Parking for RV & Many Vehicles.
Rustic Charm W/Modern Convenience! The
Perfect Property For Those Seeking A
Self-Sufficient Lifestyle. Move in Ready!



Built in 1973

Essential Information

MLS® #

E4437425

Price	\$729,000
Bedrooms	4
Bathrooms	3.50
Full Baths	3
Half Baths	1
Square Footage	1,652
Acres	2.82
Year Built	1973
Type	Rural
Sub-Type	Detached Single Family
Style	2 Storey
Status	Active

Community Information

Address	53220 Rge Road 15
Area	Rural Parkland County
Subdivision	Ashwood Meadows
City	Rural Parkland County
County	ALBERTA
Province	AB
Postal Code	T7Y 0C3

Amenities

Features	Deck, Fire Pit, Greenhouse, No Animal Home, No Smoking Home, Patio, Sunroom, Television Connection, Walkout Basement, Workshop, Natural Gas BBQ Hookup
----------	--

Interior

Interior Features	ensuite bathroom
Heating	Forced Air-2, Natural Gas
Fireplace	Yes
Stories	3
Has Basement	Yes
Basement	Full, Finished

Exterior

Exterior	Wood
Exterior Features	Backs Onto Park/Trees, Corner Lot, Fenced, Fruit Trees/Shrubs, Landscaped, Private Setting, Vegetable Garden, See Remarks

Construction	Wood
Foundation	Concrete Perimeter

Additional Information

Date Listed	May 20th, 2025
Days on Market	27
Zoning	Zone 70

DATA IS DEEMED RELIABLE BUT IS NOT GUARANTEED ACCURATE BY THE REALTORS® ASSOCIATION OF EDMONTON. COPYRIGHT 2025 BY THE REALTORS® ASSOCIATION OF EDMONTON. ALL RIGHTS RESERVED.Trademarks are owned or controlled by the Canadian Real Estate Association (CREA) and identify real estate professionals who are members of CREA (REALTOR®, REALTORS®) and/or the quality of services they provide (MLS®, Multiple Listing Service®)

Listing information last updated on June 16th, 2025 at 7:17am MDT