

\$645,000 - 54215 Rge Rd 13, Rural Lac Ste. Anne County

MLS® #E4441294

\$645,000

0 Bedroom, 0.00 Bathroom,
Rural on 125.00 Acres

None, Rural Lac Ste. Anne County, AB

RETREAT to the country & BUILD YOUR DREAM HOME! Private 125 acres, only 15 mins north west of Stony Plain desirably located in a quiet area with low traffic. Rolling hills & high/dry land makes it the perfect location to build your dream house, start a hobby farm or simply enjoy the tranquility of the space & it's private setting. GST applicable & Not Included in the asking price**

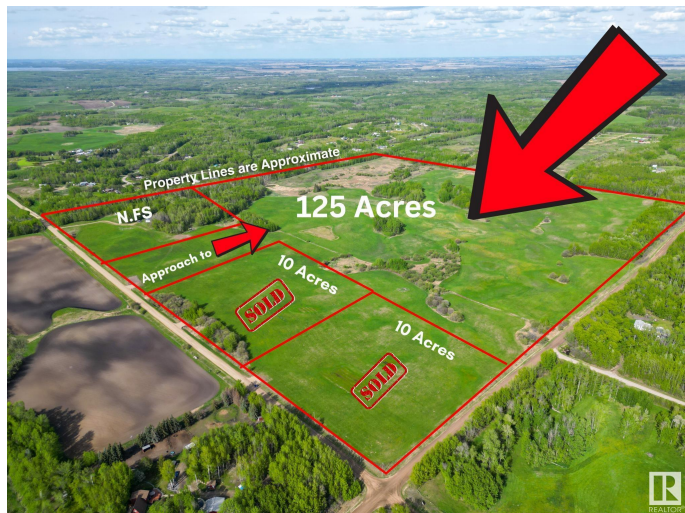
Built in 1978

Essential Information

MLS® #	E4441294
Price	\$645,000
Bathrooms	0.00
Acres	125.00
Year Built	1978
Type	Rural
Sub-Type	Vacant Lot/Land
Status	Active

Community Information

Address	54215 Rge Rd 13
Area	Rural Lac Ste. Anne County
Subdivision	None
City	Rural Lac Ste. Anne County



County	ALBERTA
Province	AB
Postal Code	T0E 1V2

Exterior

Exterior Features Level Land, Not Fenced, Private Setting, Rolling Land, See Remarks

Additional Information

Date Listed	June 9th, 2025
Days on Market	7
Zoning	Zone 70

DATA IS DEEMED RELIABLE BUT IS NOT GUARANTEED ACCURATE BY THE REALTORS® ASSOCIATION OF EDMONTON. COPYRIGHT 2025 BY THE REALTORS® ASSOCIATION OF EDMONTON. ALL RIGHTS RESERVED. Trademarks are owned or controlled by the Canadian Real Estate Association (CREA) and identify real estate professionals who are members of CREA (REALTOR®, REALTORS®) and/or the quality of services they provide (MLS®, Multiple Listing Service®)

Listing information last updated on June 16th, 2025 at 4:47am MDT