

\$515,000 - 112 Harvest Ridge Drive, Spruce Grove

MLS® #E4441615

\$515,000

4 Bedroom, 3.50 Bathroom, 1,390 sqft

Single Family on 0.00 Acres

Harvest Ridge, Spruce Grove, AB

Welcome to this turn-key, move-in-ready home in the vibrant community of Harvest Ridge, Spruce Grove! Whether you're a savvy investor or a homeowner looking for an easy mortgage helper, this property offers the perfect blend of style, function, and income potential. With 1390 sq. ft. above grade, the upstairs living space features 3 bedrooms and 2.5 bathrooms, designed with a bright, open-concept layout. The modern kitchen is beautifully finished with quartz countertops, stainless steel appliances, and ample storage. Upstairs, the spacious primary bedroom includes a private ensuite, while two additional bedrooms share a full bathroom. The fully legalized basement suite is a fantastic bonus, offering a 1-bedroom, 1-bathroom layout with its own stylish kitchen, cozy living area, and private laundry—perfect for generating rental income or accommodating extended family. A Triple detached garage adds convenience, while the home's location ensures easy access to parks, schools, and amenities.

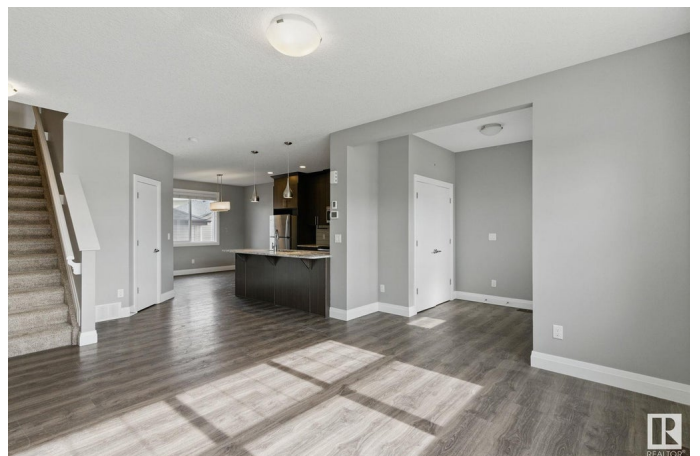
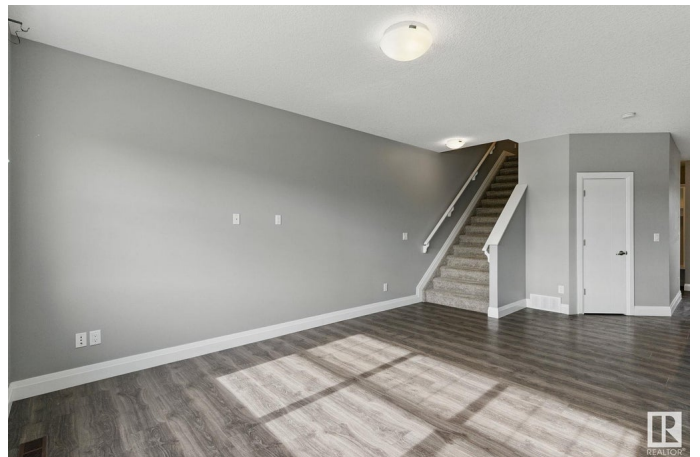
Built in 2015

Essential Information

MLS® # E4441615

Price \$515,000

Bedrooms 4



Bathrooms	3.50
Full Baths	3
Half Baths	1
Square Footage	1,390
Acres	0.00
Year Built	2015
Type	Single Family
Sub-Type	Detached Single Family
Style	2 Storey
Status	Active

Community Information

Address	112 Harvest Ridge Drive
Area	Spruce Grove
Subdivision	Harvest Ridge
City	Spruce Grove
County	ALBERTA
Province	AB
Postal Code	T7X 0V8

Amenities

Amenities	See Remarks
Parking	Tandem, Triple Garage Detached

Interior

Interior Features	ensuite bathroom
Appliances	Dishwasher-Built-In, Garage Control, Garage Opener, Microwave Hood Fan, Stove-Electric, Window Coverings, Dryer-Two, Washers-Two, Microwave Hood Fan-Two
Heating	Forced Air-1, Natural Gas
Stories	3
Has Suite	Yes
Has Basement	Yes
Basement	Full, Finished

Exterior

Exterior	Wood, Vinyl
Exterior Features	See Remarks
Roof	Asphalt Shingles

Construction	Wood, Vinyl
Foundation	Concrete Perimeter

Additional Information

Date Listed	June 10th, 2025
Days on Market	6
Zoning	Zone 91

DATA IS DEEMED RELIABLE BUT IS NOT GUARANTEED ACCURATE BY THE REALTORS® ASSOCIATION OF EDMONTON. COPYRIGHT 2025 BY THE REALTORS® ASSOCIATION OF EDMONTON. ALL RIGHTS RESERVED.Trademarks are owned or controlled by the Canadian Real Estate Association (CREA) and identify real estate professionals who are members of CREA (REALTOR®, REALTORS®) and/or the quality of services they provide (MLS®, Multiple Listing Service®)

Listing information last updated on June 16th, 2025 at 4:32am MDT