

\$499,800 - 11245 34a Avenue, Edmonton

MLS® #E4441691

\$499,800

4 Bedroom, 2.50 Bathroom, 1,850 sqft

Single Family on 0.00 Acres

Greenfield, Edmonton, AB

GREAT 4 BEDROOM GREENFIELD AREA 4 LEVEL SPLIT WITH DBL ATT GARAGE. BEAUTIFUL SOLARIUM. LARGE SOUTH FACING BACKYARD GREAT LOCATION CLOSE TO SCHOOLS ,PARKS & SHOPPING. 3PCE ENSUITE, BRIGHT & OPEN FLOORPLAN. JUST MOVE IN & DUST IN THIS EXCELLENT FAMILY HOME.

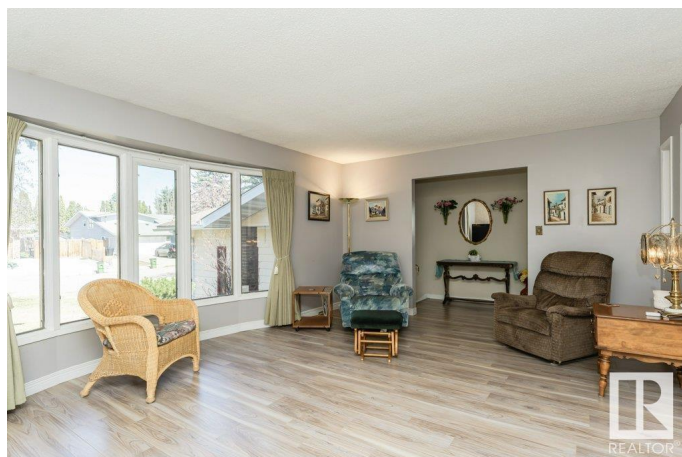
Built in 1976

Essential Information

MLS® #	E4441691
Price	\$499,800
Bedrooms	4
Bathrooms	2.50
Full Baths	2
Half Baths	1
Square Footage	1,850
Acres	0.00
Year Built	1976
Type	Single Family
Sub-Type	Detached Single Family
Style	4 Level Split
Status	Active

Community Information

Address 11245 34a Avenue



Area	Edmonton
Subdivision	Greenfield
City	Edmonton
County	ALBERTA
Province	AB
Postal Code	T6J 3M4

Amenities

Amenities	No Smoking Home
Parking	Double Garage Attached

Interior

Interior Features	ensuite bathroom
Appliances	Dishwasher-Built-In
Heating	Forced Air-1, Natural Gas
Fireplace	Yes
Fireplaces	See Remarks
Stories	4
Has Basement	Yes
Basement	Full, Finished

Exterior

Exterior	Wood, Metal
Exterior Features	Fenced, Flat Site, Fruit Trees/Shrubs, Public Transportation, Schools, Shopping Nearby, Treed Lot
Roof	Asphalt Shingles
Construction	Wood, Metal
Foundation	Concrete Perimeter

Additional Information

Date Listed	June 11th, 2025
Days on Market	57
Zoning	Zone 16

DATA IS DEEMED RELIABLE BUT IS NOT GUARANTEED ACCURATE BY THE REALTORS® ASSOCIATION OF EDMONTON. COPYRIGHT 2025 BY THE REALTORS® ASSOCIATION OF EDMONTON. ALL RIGHTS RESERVED. Trademarks are owned or controlled by the Canadian Real Estate Association (CREA) and identify real estate professionals who are members of CREA (REALTOR®, REALTORS®) and/or the quality of services they provide (MLS®, Multiple Listing Service®)

Listing information last updated on August 7th, 2025 at 3:18pm MDT