

\$249,900 - 37 320 Spruce Ridge Road, Spruce Grove

MLS® #E4441920

\$249,900

3 Bedroom, 2.00 Bathroom, 1,003 sqft

Condo / Townhouse on 0.00 Acres

Spruce Ridge, Spruce Grove, AB

Experience living in the wonderful community of Spruce Ridge. This lovely townhouse has 3 bedrooms 1.5 bathrooms. Two assigned parking stalls, the Basement is ready to be finished to your personal touch. The home features Air Conditioning, a deck and is walking distance to spruce ridge park.

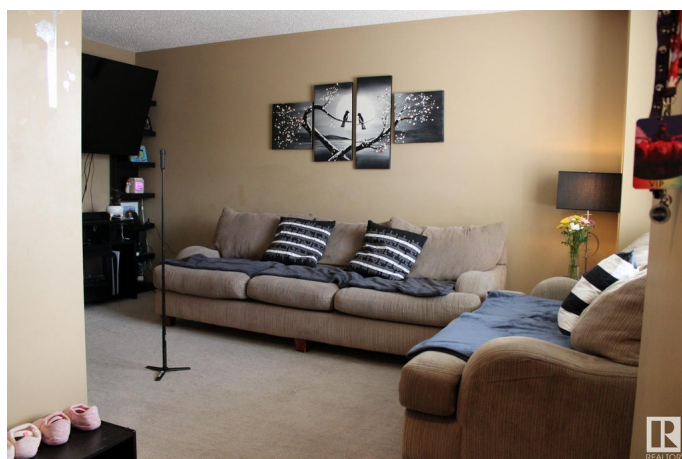
Built in 2011

Essential Information

MLS® #	E4441920
Price	\$249,900
Bedrooms	3
Bathrooms	2.00
Full Baths	2
Square Footage	1,003
Acres	0.00
Year Built	2011
Type	Condo / Townhouse
Sub-Type	Townhouse
Style	2 Storey
Status	Active

Community Information

Address	37 320 Spruce Ridge Road
Area	Spruce Grove
Subdivision	Spruce Ridge



City	Spruce Grove
County	ALBERTA
Province	AB
Postal Code	T7X 0H5

Amenities

Amenities	Air Conditioner, Deck
Parking	2 Outdoor Stalls

Interior

Appliances	Air Conditioning-Central, Dishwasher-Built-In, Dryer, Refrigerator, Stove-Electric, Washer
Heating	Forced Air-1, Natural Gas
Stories	2
Has Basement	Yes
Basement	Full, Unfinished

Exterior

Exterior	Wood, Vinyl
Exterior Features	Back Lane, Fenced
Roof	Asphalt Shingles
Construction	Wood, Vinyl
Foundation	Concrete Perimeter

Additional Information

Date Listed	June 12th, 2025
Days on Market	5
Zoning	Zone 91
Condo Fee	\$308

DATA IS DEEMED RELIABLE BUT IS NOT GUARANTEED ACCURATE BY THE REALTORS® ASSOCIATION OF EDMONTON. COPYRIGHT 2025 BY THE REALTORS® ASSOCIATION OF EDMONTON. ALL RIGHTS RESERVED.Trademarks are owned or controlled by the Canadian Real Estate Association (CREA) and identify real estate professionals who are members of CREA (REALTOR®, REALTORS®) and/or the quality of services they provide (MLS®, Multiple Listing Service®)

Listing information last updated on June 17th, 2025 at 6:32am MDT