

## \$299,900 - 131 150 Edwards Drive, Edmonton

MLS® #E4442276

**\$299,900**

2 Bedroom, 2.50 Bathroom, 1,219 sqft

Condo / Townhouse on 0.00 Acres

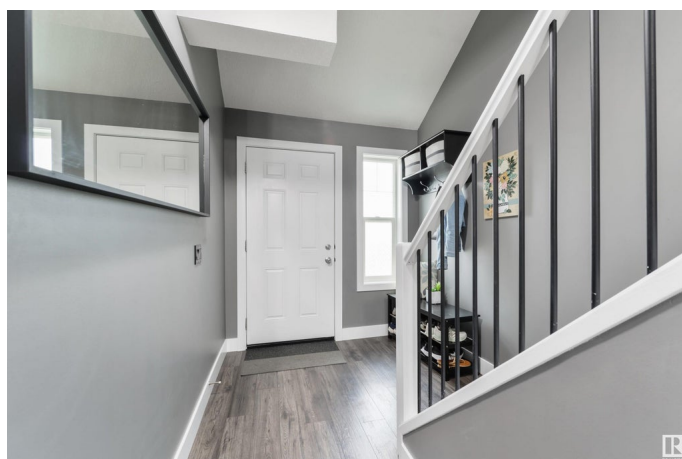
Ellerslie, Edmonton, AB

This fresh and stylish end-unit townhouse will impress from the moment you walk in! You'll love the open-concept design of the main floor. The kitchen features stainless steel appliances and granite countertops. It flows seamlessly into the dining room and living room, complete with gas fireplace. You'll enjoy summer sunsets while BBQing in your west facing yard with a low maintenance concrete patio. Step back in and cool down with your CENTRAL AC. Upstairs you'll find a 4 piece main bathroom and 2 spacious bedrooms, one with a walk-in closet and a second 4 piece ensuite. The unspoiled basement awaits your personal touch. Close proximity to all amenities, a single attached garage, visitor parking and great neighbours add to this already amazing home!

Built in 2005

### Essential Information

MLS® #	E4442276
Price	\$299,900
Bedrooms	2
Bathrooms	2.50
Full Baths	2
Half Baths	1
Square Footage	1,219
Acres	0.00



Year Built	2005
Type	Condo / Townhouse
Sub-Type	Townhouse
Style	2 Storey
Status	Active

### **Community Information**

Address	131 150 Edwards Drive
Area	Edmonton
Subdivision	Ellerslie
City	Edmonton
County	ALBERTA
Province	AB
Postal Code	T6X 1M4

### **Amenities**

Amenities	Air Conditioner
Parking	Single Garage Attached

### **Interior**

Interior Features	ensuite bathroom
Appliances	Air Conditioning-Central, Dishwasher-Built-In, Dryer, Garage Control, Garage Opener, Hood Fan, Oven-Microwave, Refrigerator, Washer, Window Coverings
Heating	Forced Air-1, Natural Gas
Stories	2
Has Basement	Yes
Basement	Full, Unfinished

### **Exterior**

Exterior	Wood, Vinyl
Exterior Features	Low Maintenance Landscape, Public Transportation, Shopping Nearby
Roof	Asphalt Shingles
Construction	Wood, Vinyl
Foundation	Concrete Perimeter

### **Additional Information**

Date Listed	June 13th, 2025
Days on Market	3

Zoning	Zone 53
Condo Fee	\$245

DATA IS DEEMED RELIABLE BUT IS NOT GUARANTEED ACCURATE BY THE REALTORS® ASSOCIATION OF EDMONTON. COPYRIGHT 2025 BY THE REALTORS® ASSOCIATION OF EDMONTON. ALL RIGHTS RESERVED. Trademarks are owned or controlled by the Canadian Real Estate Association (CREA) and identify real estate professionals who are members of CREA (REALTOR®, REALTORS®) and/or the quality of services they provide (MLS®, Multiple Listing Service®)

Listing information last updated on June 16th, 2025 at 7:17pm MDT