

\$229,900 - 10236 106 Street, Westlock

MLS® #E4442706

\$229,900

4 Bedroom, 2.00 Bathroom, 955 sqft

Single Family on 0.00 Acres

Westlock, Westlock, AB

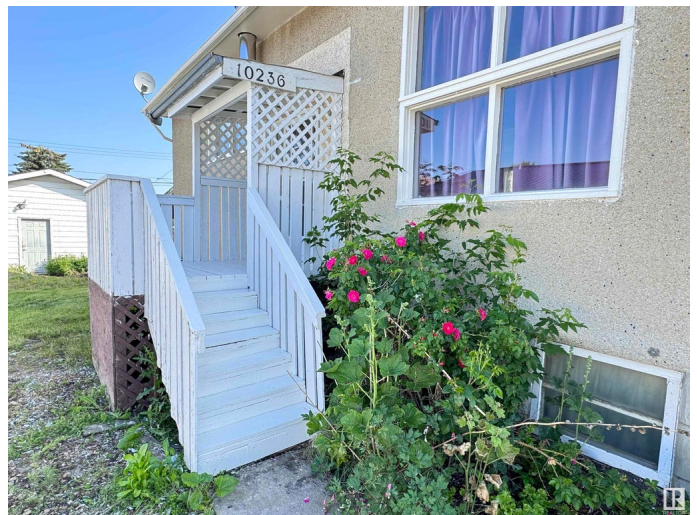
Stylish 955 sq ft bilevel in prime downtown Westlock location! Features vaulted ceilings, new shingles, fresh paint, and updated flooring throughout. Enjoy year-round comfort with hi-eff furnace & central A/C. Versatile layout with 2 beds/1 bath up & 2 beds/1 bath down, plus dual kitchens & laundry rooms. Dark Ash cabinetry highlights the upper kitchen. Stucco exterior, 125 AMP service, and spacious 24x26 det garage complete this move-in-ready home on a fenced lot. Ideal for multi-gen living or investors!

Built in 1953

Essential Information

MLS® #	E4442706
Price	\$229,900
Bedrooms	4
Bathrooms	2.00
Full Baths	2
Square Footage	955
Acres	0.00
Year Built	1953
Type	Single Family
Sub-Type	Detached Single Family
Style	Bi-Level
Status	Active

Community Information



Address	10236 106 Street
Area	Westlock
Subdivision	Westlock
City	Westlock
County	ALBERTA
Province	AB
Postal Code	T7P 1W7

Amenities

Amenities	Air Conditioner, Front Porch, Hot Water Natural Gas, No Animal Home, No Smoking Home, Parking-Extra, Vaulted Ceiling, Wood Windows, Workshop
Parking Spaces	6
Parking	Double Garage Detached

Interior

Appliances	Air Conditioning-Central, Garage Opener, Refrigerator, Stove-Electric, Window Coverings, Dryer-Two, Washers-Two
Heating	Forced Air-1, Natural Gas
Fireplace	Yes
Fireplaces	Woodstove
Stories	2
Has Basement	Yes
Basement	Full, Finished

Exterior

Exterior	Wood, Stucco
Exterior Features	Back Lane, Fenced, Flat Site, Playground Nearby, Schools, Shopping Nearby, Vegetable Garden
Roof	Asphalt Shingles
Construction	Wood, Stucco
Foundation	Concrete Perimeter

School Information

Elementary	St.Mary
Middle	St. Mary
High	St. Mary

Additional Information

Date Listed	June 16th, 2025
-------------	-----------------

Days on Market 85

Zoning Zone 70

DATA IS DEEMED RELIABLE BUT IS NOT GUARANTEED ACCURATE BY THE REALTORS® ASSOCIATION OF EDMONTON. COPYRIGHT 2025 BY THE REALTORS® ASSOCIATION OF EDMONTON. ALL RIGHTS RESERVED. Trademarks are owned or controlled by the Canadian Real Estate Association (CREA) and identify real estate professionals who are members of CREA (REALTOR®, REALTORS®) and/or the quality of services they provide (MLS®, Multiple Listing Service®)

Listing information last updated on September 9th, 2025 at 12:02pm MDT