

\$998,020 - 8413 118 Street, Edmonton

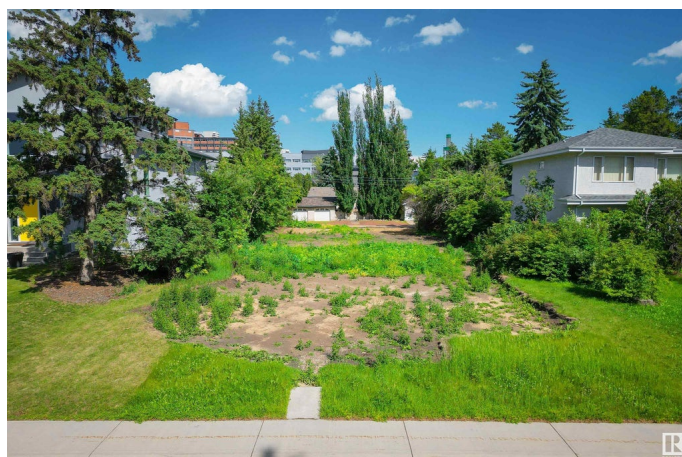
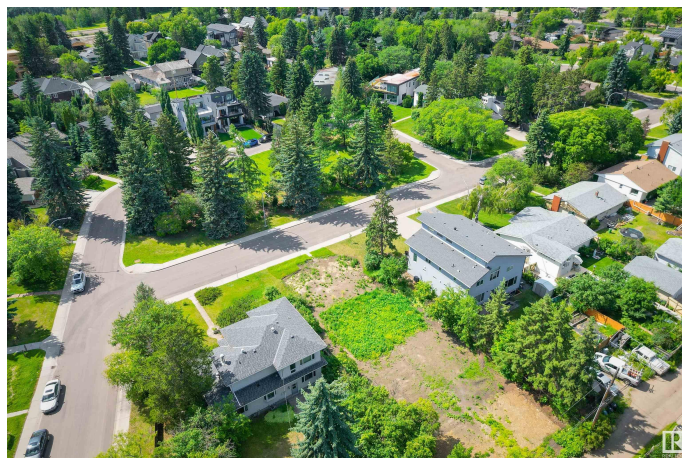
MLS® #E4445232

\$998,020

0 Bedroom, 0.00 Bathroom,
Single Family on 0.00 Acres

Windsor Park (Edmonton), Edmonton, AB

Wonderful Development opportunity in a prime, prestigious Windsor Park location! Located on a quiet local road, across from a greenspace/park. This lot is a short walk to the top-rated Windsor Park Elementary School (Score 9/10, Rank: 20/729, Fraser Institute school rankings), University of Alberta, Butterdome, Health Sciences LRT Station, Edmonton's stunning River Valley, and just minutes to downtown or Whyte Avenue. The ample 63' by 150' flat lot has already been cleared and is ready for redevelopment, with no demolition required, and with rear alley lane access. An active Development Permit (expiry October 2, 2025) includes approval for a 3-car front attached garage variance. Having an attached garage increases convenience and safety and is ideal for those with young children, those with disability issues, and those desiring to age in place. This is a desirable building site with many possibilities for in-fill development, and in a highly coveted location. Could this be your dream building site?



Essential Information

MLS® #	E4445232
Price	\$998,020
Bathrooms	0.00

Acres	0.00
Type	Single Family
Sub-Type	Vacant Lot/Land
Status	Active

Community Information

Address	8413 118 Street
Area	Edmonton
Subdivision	Windsor Park (Edmonton)
City	Edmonton
County	ALBERTA
Province	AB
Postal Code	T6G 1T2

Exterior

Exterior Features	Back Lane, Flat Site, Golf Nearby, Park/Reserve, Playground Nearby, Public Swimming Pool, Public Transportation, Schools, Shopping Nearby
-------------------	---

Additional Information

Date Listed	July 2nd, 2025
Days on Market	13
Zoning	Zone 15

DATA IS DEEMED RELIABLE BUT IS NOT GUARANTEED ACCURATE BY THE REALTORS® ASSOCIATION OF EDMONTON. COPYRIGHT 2025 BY THE REALTORS® ASSOCIATION OF EDMONTON. ALL RIGHTS RESERVED. Trademarks are owned or controlled by the Canadian Real Estate Association (CREA) and identify real estate professionals who are members of CREA (REALTOR®, REALTORS®) and/or the quality of services they provide (MLS®, Multiple Listing Service®)

Listing information last updated on July 15th, 2025 at 3:04pm MDT