

## \$509,900 - 1907 111a Street, Edmonton

MLS® #E4446936

**\$509,900**

4 Bedroom, 2.00 Bathroom, 1,296 sqft

Single Family on 0.00 Acres

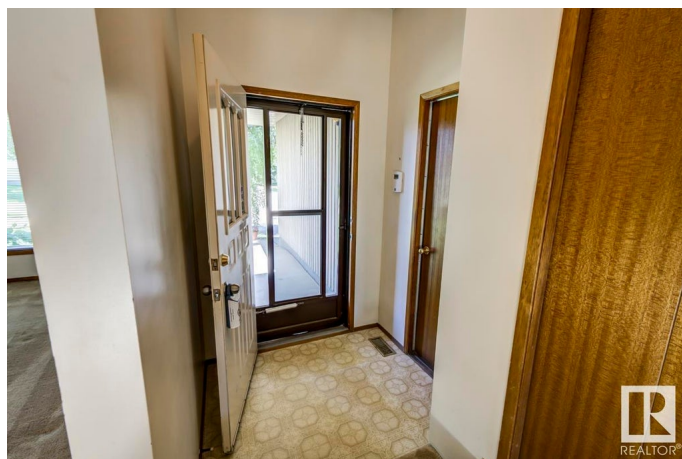
Skyrattler, Edmonton, AB

Fantastic family-sized bungalow on large pie lot in the sought-after community of Skyrattler. This home has incredible bones and all of the big ticket items are done including: newer appliances, shingles, triple pane windows, furnace, hot water tank, air conditioning and more! The main floor features 3 large bedrooms, 2 full baths, a spacious living room with beautiful brick fireplace, an eat-in kitchen plus a formal dining room. The finished basement has a large rec room with bar, bedroom (plus room for more), rough-in for another full bath, and utility area with tons of storage. Outside youâ€™ll find a fully fenced yard with large deck and a double attached garage. This home has been lovingly maintained for the past 30 years and is ready for you to make it your own! Skyrattler is a fantastic neighbourhood walking distance to LRT, shopping, and Blackmud Creek Ravine and with quick access to major roadways too!

Built in 1982

### Essential Information

MLS® #	E4446936
Price	\$509,900
Bedrooms	4
Bathrooms	2.00
Full Baths	2



Square Footage	1,296
Acres	0.00
Year Built	1982
Type	Single Family
Sub-Type	Detached Single Family
Style	Bungalow
Status	Active

### Community Information

Address	1907 111a Street
Area	Edmonton
Subdivision	Skyrattler
City	Edmonton
County	ALBERTA
Province	AB
Postal Code	T6J 5L9

### Amenities

Amenities	Air Conditioner, Bar, Deck, No Animal Home, No Smoking Home, Vinyl Windows
Parking Spaces	4
Parking	Double Garage Attached

### Interior

Interior Features	ensuite bathroom
Appliances	Air Conditioning-Central, Alarm/Security System, Dishwasher-Built-In, Dryer, Freezer, Garage Control, Garage Opener, Hood Fan, Oven-Microwave, Refrigerator, Stove-Electric, Vacuum System Attachments, Vacuum Systems, Washer, Window Coverings
Heating	Forced Air-1, Natural Gas
Fireplace	Yes
Fireplaces	Brick Facing
Stories	2
Has Basement	Yes
Basement	Full, Finished

### Exterior

Exterior	Wood
Exterior Features	Fenced, Flat Site, Golf Nearby, Landscaped, No Back Lane, Playground Nearby, Public Swimming Pool, Public Transportation, Schools,

Shopping Nearby, Ski Hill Nearby

Roof	Asphalt Shingles
Construction	Wood
Foundation	Concrete Perimeter

**School Information**

Elementary	Nicholson, Keheewin
Middle	DS MacKenzie,L. St.Laurent
High	Harry Ainlay, Percy Page

**Additional Information**

Date Listed	July 10th, 2025
Days on Market	4
Zoning	Zone 16

DATA IS DEEMED RELIABLE BUT IS NOT GUARANTEED ACCURATE BY THE REALTORS® ASSOCIATION OF EDMONTON. COPYRIGHT 2025 BY THE REALTORS® ASSOCIATION OF EDMONTON. ALL RIGHTS RESERVED.Trademarks are owned or controlled by the Canadian Real Estate Association (CREA) and identify real estate professionals who are members of CREA (REALTOR®, REALTORS®) and/or the quality of services they provide (MLS®, Multiple Listing Service®)

Listing information last updated on July 14th, 2025 at 3:32am MDT