

## \$249,900 - 401 11969 Jasper Avenue, Edmonton

MLS® #E4448200

**\$249,900**

1 Bedroom, 1.00 Bathroom, 519 sqft

Condo / Townhouse on 0.00 Acres

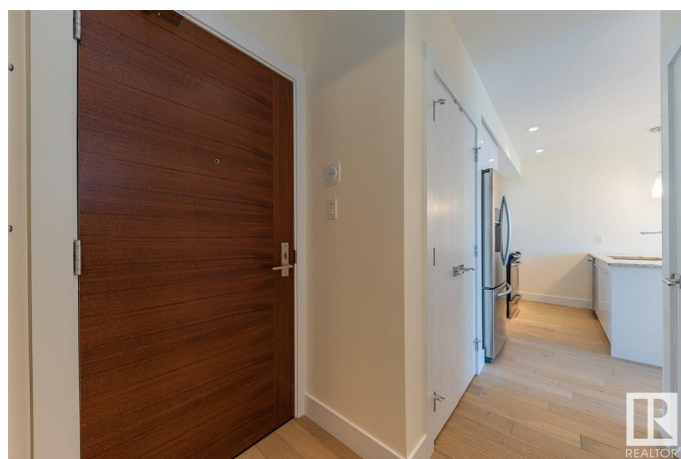
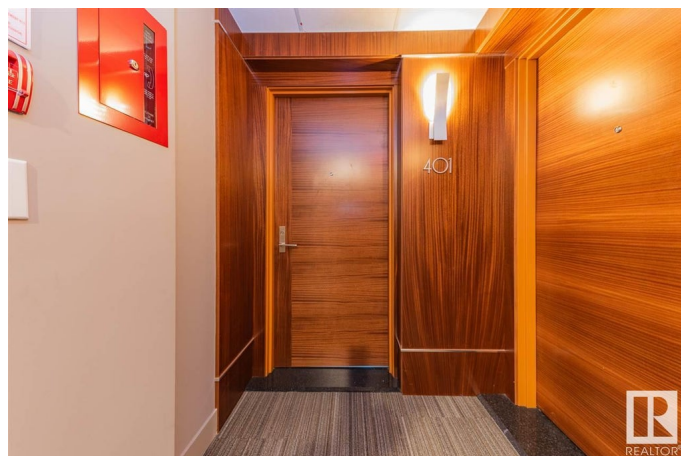
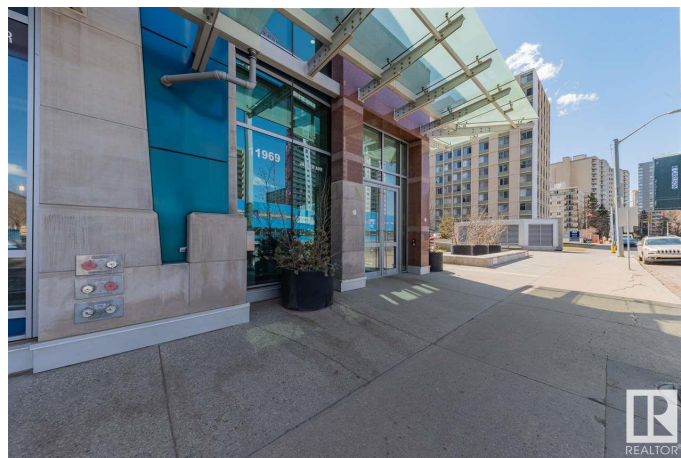
WÃ@hkwÃªntÃ´win, Edmonton, AB

Immaculate 1 Bedroom Executive Condo in the Magnificent Pearl Tower. Features Floor to Ceiling Windows, New White Oak Engineered Flooring, Open Floor Plan, Lovely Kitchen with Granite Counters and Stainless Steel Appliances, Spacious Living Room with Glass Door Access to the Balcony, Four Piece Bathroom with Soaker Tub/Shower Surround and Cheater Door to the Master Bedroom. Insuite Laundry, Hidden Roller Blinds, In-Ceiling Speakers, Heat Pump Heating/Central Air Conditioning, Programable Thermostat. Also, Includes a Titled Underground Parking Stall (#352) with Storage Cage. Complex Amenities Include On Site Concierge Service, Fitness Room, Social Rooms with Kitchen and Patio Area. Exceptional Location Near Restaurants, Shopping, Transportation, the River Valley and All Amenities.

Built in 2015

### Essential Information

MLS® #	E4448200
Price	\$249,900
Bedrooms	1
Bathrooms	1.00
Full Baths	1
Square Footage	519



Acres	0.00
Year Built	2015
Type	Condo / Townhouse
Sub-Type	Apartment High Rise
Style	Single Level Apartment
Status	Active

### Community Information

Address	401 11969 Jasper Avenue
Area	Edmonton
Subdivision	WÃ©hkwÃ©ntÃ©win
City	Edmonton
County	ALBERTA
Province	AB
Postal Code	T5K 0P1

### Amenities

Amenities	Air Conditioner, Car Wash, Exercise Room, No Animal Home, No Smoking Home, Parking-Visitor, Party Room, Secured Parking, Security Personnel, Social Rooms, Concierge Service
Parking	Heated, Underground

### Interior

Appliances	Dishwasher-Built-In, Garburator, Microwave Hood Fan, Refrigerator, Stacked Washer/Dryer, Stove-Electric, Window Coverings
Heating	Heat Pump, Natural Gas
# of Stories	36
Stories	1
Has Basement	Yes
Basement	None, No Basement

### Exterior

Exterior	Concrete, Metal
Exterior Features	Back Lane, Golf Nearby, Park/Reserve, Public Transportation, Shopping Nearby, View City, View Downtown
Roof	Roll Roofing
Construction	Concrete, Metal
Foundation	Concrete Perimeter

### Additional Information

Date Listed	July 17th, 2025
Days on Market	62
Zoning	Zone 12
Condo Fee	\$553

DATA IS DEEMED RELIABLE BUT IS NOT GUARANTEED ACCURATE BY THE REALTORS® ASSOCIATION OF EDMONTON. COPYRIGHT 2025 BY THE REALTORS® ASSOCIATION OF EDMONTON. ALL RIGHTS RESERVED. Trademarks are owned or controlled by the Canadian Real Estate Association (CREA) and identify real estate professionals who are members of CREA (REALTOR®, REALTORS®) and/or the quality of services they provide (MLS®, Multiple Listing Service®)

Listing information last updated on September 17th, 2025 at 4:32am MDT