

\$1,100,000 - 9860 75 Avenue, Edmonton

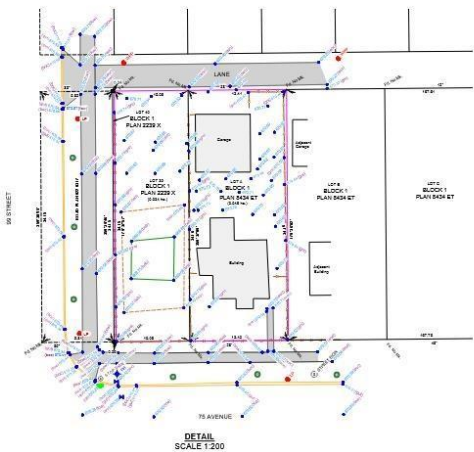
MLS® #E4448212

\$1,100,000

0 Bedroom, 0.00 Bathroom,
Single Family on 0.00 Acres

Ritchie, Edmonton, AB

A rare opportunity to acquire a vacant multifamily lot in the sought-after Ritchie neighbourhood, fronting bustling 99 Street. Zoned RMh16, this lot offers immense development potential for a multi-unit residential project in one of Edmonton's most vibrant and revitalized communities. * Lot Size: 803 mÂ² (Buyer to verify) * Zoning: RMh16 â€“ ideal for low- to medium-density multifamily development. * Location Perks: High visibility along 99 Street, minutes from Whyte Avenue, Mill Creek Ravine, Downtown and University of Alberta. * Development-Ready: No demolition required â€“ vacant and clear for immediate planning. Don't miss out on this clean-slate investment opportunity in a high-demand infill location.



Essential Information

| | |
|-----------|-----------------|
| MLS® # | E4448212 |
| Price | \$1,100,000 |
| Bathrooms | 0.00 |
| Acres | 0.00 |
| Type | Single Family |
| Sub-Type | Vacant Lot/Land |
| Status | Active |

Community Information

| | |
|---------|----------------|
| Address | 9860 75 Avenue |
|---------|----------------|

| | |
|-------------|----------|
| Area | Edmonton |
| Subdivision | Ritchie |
| City | Edmonton |
| County | ALBERTA |
| Province | AB |
| Postal Code | T6E 1J1 |

Exterior

Exterior Features Playground Nearby, Schools, Shopping Nearby, View Downtown

Additional Information

| | |
|----------------|-----------------|
| Date Listed | July 17th, 2025 |
| Days on Market | 9 |
| Zoning | Zone 17 |

DATA IS DEEMED RELIABLE BUT IS NOT GUARANTEED ACCURATE BY THE REALTORS® ASSOCIATION OF EDMONTON. COPYRIGHT 2025 BY THE REALTORS® ASSOCIATION OF EDMONTON. ALL RIGHTS RESERVED. Trademarks are owned or controlled by the Canadian Real Estate Association (CREA) and identify real estate professionals who are members of CREA (REALTOR®, REALTORS®) and/or the quality of services they provide (MLS®, Multiple Listing Service®)

Listing information last updated on July 26th, 2025 at 7:02pm MDT