

\$565,000 - 13 Newmarket Way, St. Albert

MLS® #E4449371

\$565,000

4 Bedroom, 3.00 Bathroom, 1,286 sqft

Single Family on 0.00 Acres

North Ridge, St. Albert, AB

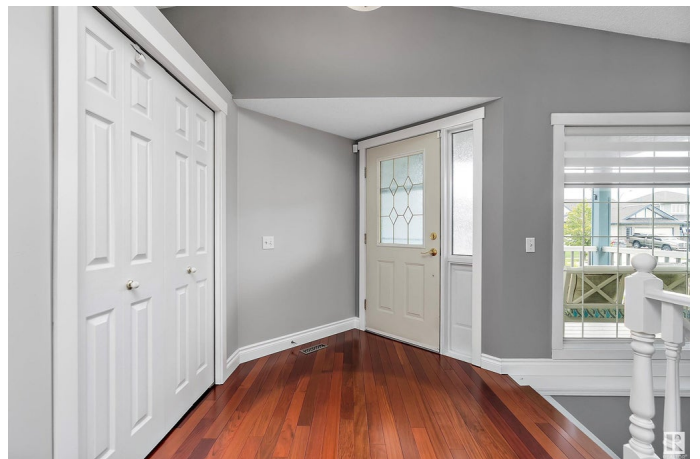
Welcome to this move-in ready NORTH RIDGE bungalow situated on a prime corner lot! Nearly 2,600 sf of F/F living space with vaulted ceilings, heated double attached garage & recent updates that incl. shingles & HWT (2022). The main floor features cherry hardwood, a convenient laundry/mud room with ample storage, 2 spacious bedrooms incl. a primary w/ a walk-in closet & 3pc ensuite, plus a 4pc main bath. The open-concept kitchen offers granite counters, mozaic tile backsplash, custom pull-outs & skylight, overlooking the spacious living room with its gas fireplace/mantle & dining area. Zebra roller blinds dress all the main floor windows while the patio doors have built-in shades. Downstairs, the finished basement incl. a large rec room, 2 additional bedrooms (1 with cheater ensuite) & 3pc bath. Enjoy the private, low-maintenance deck equipped with a gas BBQ hook-up, surrounded by mature aspen & cherry trees, perfect for entertaining. Lovingly maintained & ready for a quick possession in its new chapter!

Built in 2000

Essential Information

MLS® # E4449371

Price \$565,000



Bedrooms	4
Bathrooms	3.00
Full Baths	3
Square Footage	1,286
Acres	0.00
Year Built	2000
Type	Single Family
Sub-Type	Detached Single Family
Style	Bungalow
Status	Active

Community Information

Address	13 Newmarket Way
Area	St. Albert
Subdivision	North Ridge
City	St. Albert
County	ALBERTA
Province	AB
Postal Code	T8N 6Y8

Amenities

Amenities	On Street Parking, Deck, Detectors Smoke, Front Porch, Skylight, Vaulted Ceiling, Vinyl Windows, Vacuum System-Roughed-In
Parking	Double Garage Attached

Interior

Interior Features	ensuite bathroom
Appliances	Dishwasher-Built-In, Dryer, Garburator, Hood Fan, Refrigerator, Stove-Gas, Washer, Curtains and Blinds
Heating	Forced Air-1, Natural Gas
Fireplace	Yes
Fireplaces	Mantel, Tile Surround
Stories	2
Has Basement	Yes
Basement	Full, Finished

Exterior

Exterior	Wood, Brick, Vinyl
Exterior Features	Fenced, Flat Site, Fruit Trees/Shrubs, Landscaped, No Back Lane,

Playground Nearby, Public Transportation, Schools, Shopping Nearby,
Treed Lot

Roof	Asphalt Shingles
Construction	Wood, Brick, Vinyl
Foundation	Concrete Perimeter

School Information

High	Bellerose Composite HS
------	------------------------

Additional Information

Date Listed	July 24th, 2025
Days on Market	2
Zoning	Zone 24

DATA IS DEEMED RELIABLE BUT IS NOT GUARANTEED ACCURATE BY THE REALTORS® ASSOCIATION OF EDMONTON. COPYRIGHT 2025 BY THE REALTORS® ASSOCIATION OF EDMONTON. ALL RIGHTS RESERVED. Trademarks are owned or controlled by the Canadian Real Estate Association (CREA) and identify real estate professionals who are members of CREA (REALTOR®, REALTORS®) and/or the quality of services they provide (MLS®, Multiple Listing Service®)

Listing information last updated on July 26th, 2025 at 5:32pm MDT