

\$449,900 - 16115 90 Avenue, Edmonton

MLS® #E4449749

\$449,900

4 Bedroom, 2.00 Bathroom, 1,094 sqft

Single Family on 0.00 Acres

Meadowlark Park (Edmonton), Edmonton, AB

Welcome to this spectacularly maintained bungalow, in the highly desirable west-central neighbourhood of Meadowlark Park!

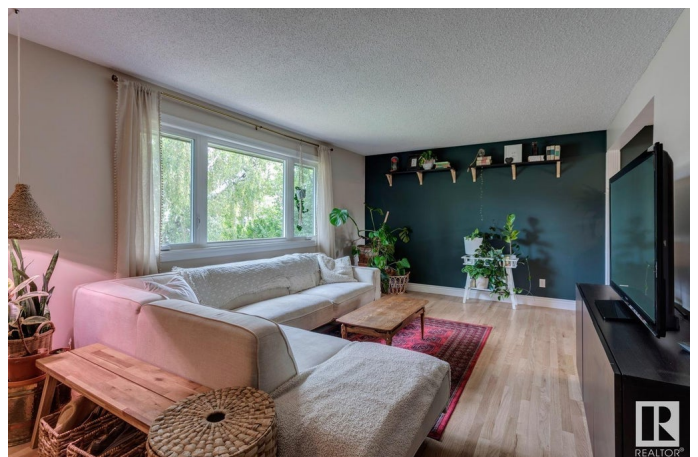
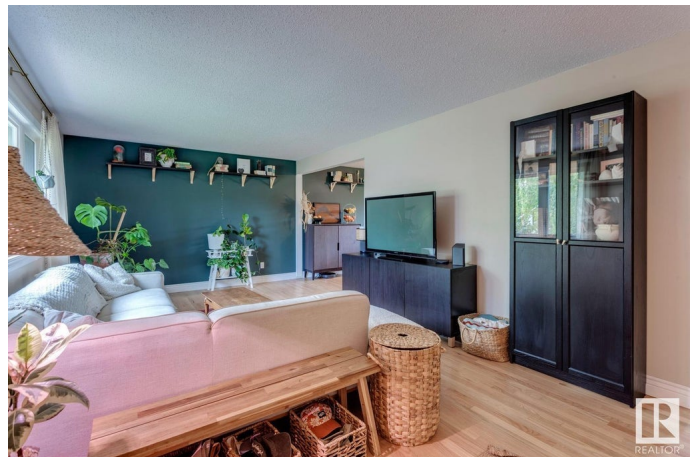
Thoughtfully updated over the years, the home features a new house roof (2023) & garage roof (2019), new triple-pane windows throughout the main level, plus a new fence on the south and west sides. The living room is spacious & bright with newly refinished hardwood flooring - the perfect place to entertain friends or relax with family. The kitchen flows seamlessly to your dining room with a massive window framing the lovely yard. 3 good sized bedrooms & a 4pce bathroom round out this level of the home. The basement is fully finished with massive rec room, 2 additional bedrooms & full bath. The backyard is a true retreat - extremely private and perfect for relaxing or tending to your vegetable garden. With excellent proximity to some of Edmonton's best schools and shopping, this beautifully cared-for bungalow offers comfort, privacy, and a prime location close to everything you need.

Built in 1961

Essential Information

MLS® # E4449749

Price \$449,900



Bedrooms	4
Bathrooms	2.00
Full Baths	2
Square Footage	1,094
Acres	0.00
Year Built	1961
Type	Single Family
Sub-Type	Detached Single Family
Style	Bungalow
Status	Active

Community Information

Address	16115 90 Avenue
Area	Edmonton
Subdivision	Meadowlark Park (Edmonton)
City	Edmonton
County	ALBERTA
Province	AB
Postal Code	T5R 4W7

Amenities

Amenities	Vinyl Windows, See Remarks
Parking	Double Garage Detached

Interior

Appliances	Dishwasher-Built-In, Dryer, Garage Control, Garage Opener, Refrigerator, Stove-Electric, Washer, See Remarks, TV Wall Mount
Heating	Forced Air-1, Natural Gas
Stories	2
Has Basement	Yes
Basement	Full, Finished

Exterior

Exterior	Wood, Brick, Stucco, Vinyl
Exterior Features	Back Lane, Fenced, Flat Site, Landscaped, Park/Reserve, Playground Nearby, Public Swimming Pool, Public Transportation, Schools, Shopping Nearby, Treed Lot
Roof	Asphalt Shingles
Construction	Wood, Brick, Stucco, Vinyl

Foundation Concrete Perimeter

School Information

Elementary Meadowlark
Middle Hillcrest
High Jasper Place

Additional Information

Date Listed July 25th, 2025
Days on Market 1
Zoning Zone 22

DATA IS DEEMED RELIABLE BUT IS NOT GUARANTEED ACCURATE BY THE REALTORS® ASSOCIATION OF EDMONTON. COPYRIGHT 2025 BY THE REALTORS® ASSOCIATION OF EDMONTON. ALL RIGHTS RESERVED.Trademarks are owned or controlled by the Canadian Real Estate Association (CREA) and identify real estate professionals who are members of CREA (REALTOR®, REALTORS®) and/or the quality of services they provide (MLS®, Multiple Listing Service®)
Listing information last updated on July 26th, 2025 at 5:32pm MDT