

\$209,900 - 3301 142 Avenue, Edmonton

MLS® #E4450455

\$209,900

3 Bedroom, 1.50 Bathroom, 1,180 sqft
Condo / Townhouse on 0.00 Acres

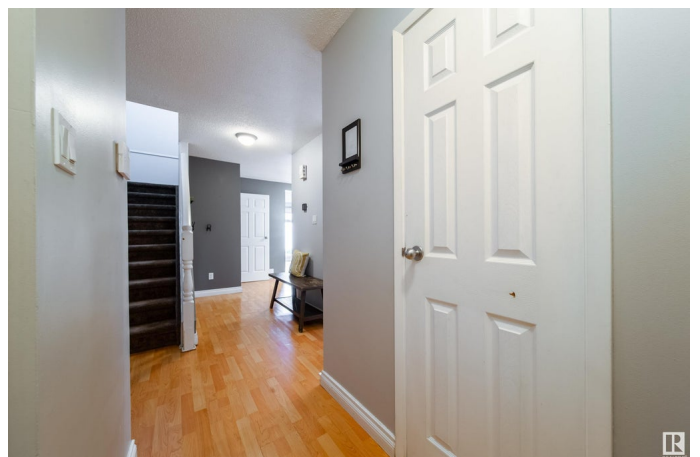
Hairsine, Edmonton, AB

Welcome to this move-in-ready 3 bedroom, 1.5 bathroom condo that offers an ideal blend of comfort, upgrades, and space for the whole family. The main floor features a beautifully updated kitchen with modern cabinetry, stainless steel appliances, and a pantry for extra storage. Just off the kitchen is the dining area and an oversized living room that overlooks your large, private backyard; perfect for summer BBQs, kids at play, or cozy evenings under the stars. A convenient 2-piece bathroom completes the main level. Upstairs, you'll find three generously sized bedrooms and a full 4-piece bathroom. The fully finished basement offers a huge family or rec room, a dedicated laundry area, and plenty of room for seasonal storage. Two assigned parking stalls are included, and you're just steps from a playground and schools, making this the perfect place to call home for growing families or first-time buyers alike. Enjoy easy access to all major amenities, with convenient routes to the Henday and Yellowhead.

Built in 1979

Essential Information

MLS® #	E4450455
Price	\$209,900
Bedrooms	3



Bathrooms	1.50
Full Baths	1
Half Baths	1
Square Footage	1,180
Acres	0.00
Year Built	1979
Type	Condo / Townhouse
Sub-Type	Townhouse
Style	2 Storey
Status	Active

Community Information

Address	3301 142 Avenue
Area	Edmonton
Subdivision	Hairsine
City	Edmonton
County	ALBERTA
Province	AB
Postal Code	T5Y 1M9

Amenities

Amenities	Closet Organizers, Deck, No Smoking Home, Vinyl Windows
Parking Spaces	2
Parking	2 Outdoor Stalls

Interior

Appliances	Dishwasher-Built-In, Dryer, Hood Fan, Refrigerator, Stove-Electric, Washer, Window Coverings
Heating	Forced Air-1, Natural Gas
Fireplace	Yes
Fireplaces	Stone Facing
Stories	3
Has Basement	Yes
Basement	Full, Finished

Exterior

Exterior	Wood, Stucco
Exterior Features	Flat Site, Golf Nearby, Landscaped, Picnic Area, Playground Nearby, Public Swimming Pool, Public Transportation, Schools, Shopping

	Nearby, Ski Hill Nearby
Roof	Asphalt Shingles
Construction	Wood, Stucco
Foundation	Concrete Perimeter

School Information

Elementary	Kirkness, St Bonaventure
Middle	John D Bracco, St Elizabeth
High	Eastglen, Austin OBrien

Additional Information

Date Listed	July 31st, 2025
Days on Market	2
Zoning	Zone 35
Condo Fee	\$425

DATA IS DEEMED RELIABLE BUT IS NOT GUARANTEED ACCURATE BY THE REALTORS® ASSOCIATION OF EDMONTON. COPYRIGHT 2025 BY THE REALTORS® ASSOCIATION OF EDMONTON. ALL RIGHTS RESERVED. Trademarks are owned or controlled by the Canadian Real Estate Association (CREA) and identify real estate professionals who are members of CREA (REALTOR®, REALTORS®) and/or the quality of services they provide (MLS®, Multiple Listing Service®)

Listing information last updated on August 1st, 2025 at 10:32pm MDT