

## \$319,900 - 226 200 Bethel Drive, Sherwood Park

MLS® #E4451196

**\$319,900**

1 Bedroom, 2.00 Bathroom, 941 sqft

Condo / Townhouse on 0.00 Acres

Strathcona Village, Sherwood Park, AB

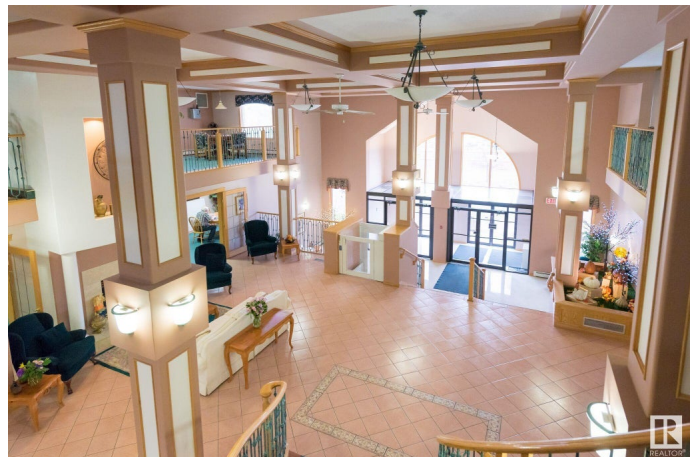
Enjoy CAREFREE LIVING at Sherwood Park's premiere adult community. With outstanding amenities, management & residents.. it's truly a complex any 55+ buyer will enjoy. Enjoy a slower pace on your west-facing balcony. There's a BBQ gasline for summer suppers & you'll keep cool with central air conditioning. Living room has a gas fireplace & the kitchen has a pantry. The primary bedroom features a 4-pc ensuite & walk-in closet. Also a den with a closet. There is a 2nd bathroom & a separate laundry room in-suite. Never brush snow from your vehicle again: one heated underground parking stall is included! and a locking storage room keeps your belongings dust-free & secure. Condo fee of \$682 covers power/water/heat...& so many extras: free carwash, indoor pool & hot tub, exercise room, library, media room, sewing/hobby room, billiards, woodworking shop, patio BBQ area, guest suites every floor & a party room for rent. The Sierras is undergoing an interior makeover: new paint & flooring, with healthy reserve fund.

Built in 2000

### Essential Information

MLS® # E4451196

Price \$319,900



Bedrooms	1
Bathrooms	2.00
Full Baths	2
Square Footage	941
Acres	0.00
Year Built	2000
Type	Condo / Townhouse
Sub-Type	Lowrise Apartment
Style	Single Level Apartment
Status	Active

### Community Information

Address	226 200 Bethel Drive
Area	Sherwood Park
Subdivision	Strathcona Village
City	Sherwood Park
County	ALBERTA
Province	AB
Postal Code	T8H 2C5

### Amenities

Amenities	Air Conditioner, Car Wash, Exercise Room, Guest Suite, Hot Tub, Intercom, No Animal Home, No Smoking Home, Parking-Visitor, Party Room, Patio, Pool-Indoor, Secured Parking, Security Door, Social Rooms, Sprinkler System-Fire, Storage-Locker Room, Workshop, Storage Cage, Natural Gas BBQ Hookup
Parking	Heated, Parkade, Underground
Has Pool	Yes

### Interior

Interior Features	ensuite bathroom
Appliances	Air Conditioning-Central, Dishwasher-Built-In, Hood Fan, Oven-Microwave, Refrigerator, Stacked Washer/Dryer, Stove-Electric, Window Coverings
Heating	Hot Water, Natural Gas
# of Stories	4
Stories	1
Has Basement	Yes
Basement	None, No Basement

**Exterior**

Exterior	Wood, Brick, Stucco
Exterior Features	Backs Onto Park/Trees, Low Maintenance Landscape, No Through Road, Picnic Area, Playground Nearby, Public Transportation, Schools, Shopping Nearby
Roof	Clay Tile
Construction	Wood, Brick, Stucco
Foundation	Concrete Perimeter

**Additional Information**

Date Listed	August 5th, 2025
Days on Market	3
Zoning	Zone 25
Condo Fee	\$681

DATA IS DEEMED RELIABLE BUT IS NOT GUARANTEED ACCURATE BY THE REALTORS® ASSOCIATION OF EDMONTON. COPYRIGHT 2025 BY THE REALTORS® ASSOCIATION OF EDMONTON. ALL RIGHTS RESERVED.Trademarks are owned or controlled by the Canadian Real Estate Association (CREA) and identify real estate professionals who are members of CREA (REALTOR®, REALTORS®) and/or the quality of services they provide (MLS®, Multiple Listing Service®)

Listing information last updated on August 7th, 2025 at 9:31pm MDT