

\$789,900 - 31 Everest Crescent, St. Albert

MLS® #E4451670

\$789,900

4 Bedroom, 3.00 Bathroom, 1,670 sqft

Single Family on 0.00 Acres

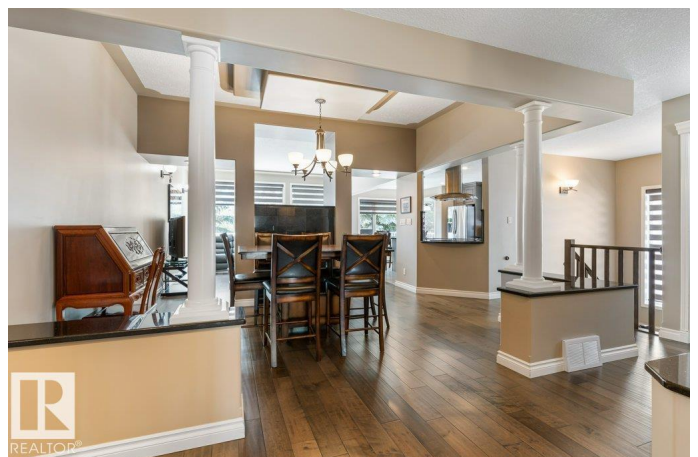
Erin Ridge, St. Albert, AB

Situated on a quiet crescent just steps to shops of Boudreau, parks and trail you will find this beautifully completely **RENOVATED** walkout **BUNGALOW**. The main floor has new engineered **HARDWOOD** throughout the main living areas, new high end kitchen with upgraded appliances, granite countertops, under mount lighting and lots of storage! The living room has a **DOUBLE SIDED GAS FIREPLACE**, soaring high ceilings and large windows. There is a spacious dining area, custom mud room with extra cabinets and **MAIN FLOOR LAUNDRY**. There are **TWO** main floor bedrooms and a main 4pce bathroom. The primary bedroom has a **RENOVATED ENSUITE** with double sinks, o/s shower and walk in closet. The **FULLY FINISHED** basement has a large rec room, two large bedrooms and 4pce bathroom. You will love the outdoor space featuring a full length deck with fabulous views! This home is truly move-in ready and shows beautifully!

Built in 1996

Essential Information

MLS® #	E4451670
Price	\$789,900
Bedrooms	4
Bathrooms	3.00



Full Baths	3
Square Footage	1,670
Acres	0.00
Year Built	1996
Type	Single Family
Sub-Type	Detached Single Family
Style	Bungalow
Status	Active

Community Information

Address	31 Everest Crescent
Area	St. Albert
Subdivision	Erin Ridge
City	St. Albert
County	ALBERTA
Province	AB
Postal Code	T8N 6L1

Amenities

Amenities	Deck, Walkout Basement
Parking	Double Garage Attached

Interior

Interior Features	ensuite bathroom
Appliances	Dishwasher-Built-In, Dryer, Garage Control, Garage Opener, Hood Fan, Oven-Microwave, Refrigerator, Stove-Electric, Vacuum System Attachments, Vacuum Systems, Washer, Garage Heater
Heating	Forced Air-1, Natural Gas
Stories	2
Has Basement	Yes
Basement	Full, Finished

Exterior

Exterior	Wood, Stucco
Exterior Features	Fenced, Landscaped, Playground Nearby, Public Transportation, Schools, Shopping Nearby
Roof	Asphalt Shingles
Construction	Wood, Stucco
Foundation	Concrete Perimeter

Additional Information

Date Listed August 7th, 2025
Days on Market 2
Zoning Zone 24

DATA IS DEEMED RELIABLE BUT IS NOT GUARANTEED ACCURATE BY THE REALTORS® ASSOCIATION OF EDMONTON. COPYRIGHT 2025 BY THE REALTORS® ASSOCIATION OF EDMONTON. ALL RIGHTS RESERVED.Trademarks are owned or controlled by the Canadian Real Estate Association (CREA) and identify real estate professionals who are members of CREA (REALTOR®, REALTORS®) and/or the quality of services they provide (MLS®, Multiple Listing Service®)
Listing information last updated on August 9th, 2025 at 4:17am MDT