

\$429,900 - 2710 Coughlan Green Green, Edmonton

MLS® #E4452028

\$429,900

3 Bedroom, 2.50 Bathroom, 1,732 sqft

Single Family on 0.00 Acres

Chappelle Area, Edmonton, AB

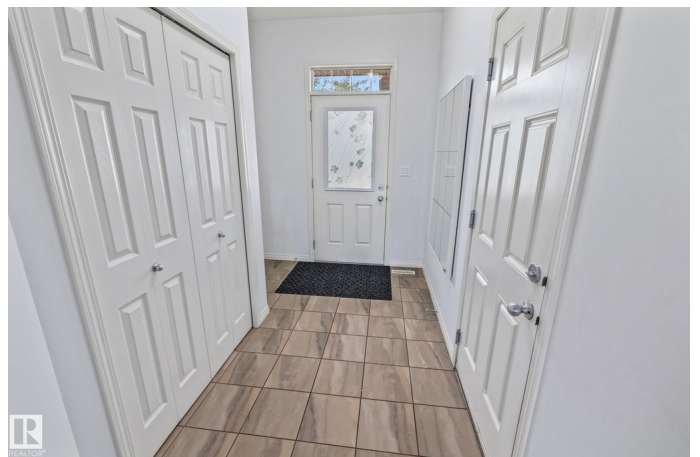
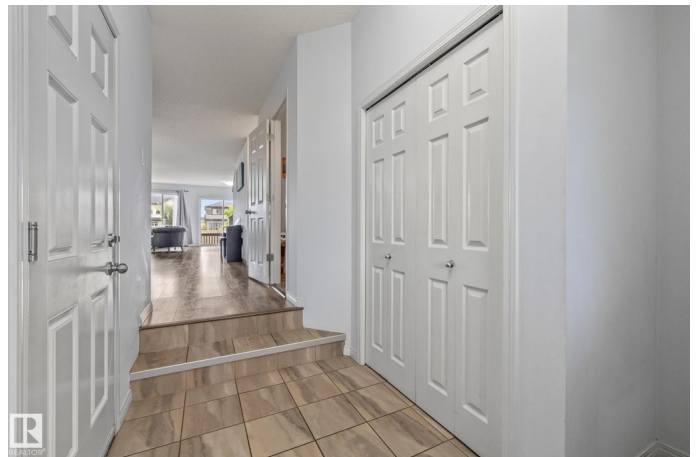
Discover this stunning 3-bedroom, 2.5-bathroom half duplex offering 1,732 sq ft of thoughtfully designed living space in one of Edmonton's most sought-after communities. Built in 2016, this well-maintained home features an open-concept main floor perfect for entertaining, with a spacious kitchen flowing seamlessly into the dining and living areas. The upper level boasts three comfortable bedrooms, including a master suite with ensuite bathroom, while the main floor powder room adds convenience for guests. Stay comfortable year-round with central air conditioning. Located in the heart of Chappelle Gardens within the prestigious Heritage Valley area, you'll enjoy resort-style amenities right at your doorstep including an outdoor skating rink, extensive walking trails, community gardens, basketball courts, picnic areas, and a splash park for the kids. This move-in ready home combines modern comfort with community living at its finest. Don't miss this opportunity to call Chappelle Gardens home!

Built in 2016

Essential Information

MLS® # E4452028

Price \$429,900



Bedrooms	3
Bathrooms	2.50
Full Baths	2
Half Baths	1
Square Footage	1,732
Acres	0.00
Year Built	2016
Type	Single Family
Sub-Type	Half Duplex
Style	2 Storey
Status	Active

Community Information

Address	2710 Coughlan Green Green
Area	Edmonton
Subdivision	Chappelle Area
City	Edmonton
County	ALBERTA
Province	AB
Postal Code	T6W 3N8

Amenities

Amenities	Air Conditioner, No Animal Home, No Smoking Home
Parking	Single Garage Attached

Interior

Interior Features	ensuite bathroom
Appliances	Air Conditioning-Central, Dishwasher - Energy Star, Dryer, Garage Control, Garage Opener, Microwave Hood Fan, Refrigerator, Stove-Electric, Washer, Window Coverings
Heating	Forced Air-1, Natural Gas
Stories	2
Has Basement	Yes
Basement	Full, Unfinished

Exterior

Exterior	Wood, Vinyl
Exterior Features	Airport Nearby, Fenced, Public Transportation, Schools, Shopping Nearby

Roof	Asphalt Shingles
Construction	Wood, Vinyl
Foundation	Concrete Perimeter

Additional Information

Date Listed	August 8th, 2025
Days on Market	3
Zoning	Zone 55

DATA IS DEEMED RELIABLE BUT IS NOT GUARANTEED ACCURATE BY THE REALTORS® ASSOCIATION OF EDMONTON. COPYRIGHT 2025 BY THE REALTORS® ASSOCIATION OF EDMONTON. ALL RIGHTS RESERVED.Trademarks are owned or controlled by the Canadian Real Estate Association (CREA) and identify real estate professionals who are members of CREA (REALTOR®, REALTORS®) and/or the quality of services they provide (MLS®, Multiple Listing Service®)

Listing information last updated on August 11th, 2025 at 8:32am MDT