

\$219,500 - 319 9730 174 Street, Edmonton

MLS® #E4452125

\$219,500

2 Bedroom, 2.00 Bathroom, 977 sqft

Condo / Townhouse on 0.00 Acres

Terra Losa, Edmonton, AB

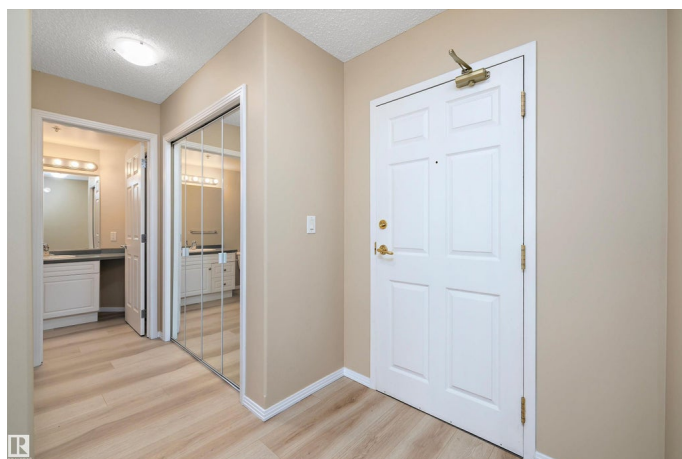
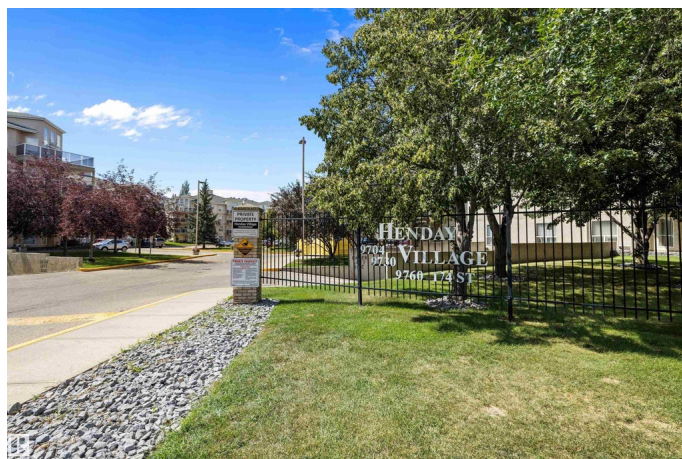
Welcome to Henday Village! This immaculately maintained 2 bed, 2 bath condo in a sought-after 18+ community offers comfort, style & convenience. The thoughtful split-bedroom layout places each bedroom next to its own full bath for maximum privacy. A bright U-shaped kitchen with pantry, generous cabinets & raised breakfast bar opens to a dining area & sun-filled living room with access to a covered SW-facing balcony overlooking landscaped grounds. The spacious primary bedroom boasts a walk-through closet & 4-pc ensuite. Added perks include in-suite laundry with storage & titled heated underground parking with storage cage. Building amenities: fully equipped fitness room, social/party room, car wash bay & ample visitor parking. Condo fees cover heat, water & more. Enjoy a prime Terra Losa location steps to shopping, restaurants, parks, walking trails & transit, minutes to WEM, Misericordia Hospital & Anthony Henday. Move-in ready in a secure, well-managed building! Immediate possession available!

Built in 2000

Essential Information

MLS® # E4452125

Price \$219,500



Bedrooms	2
Bathrooms	2.00
Full Baths	2
Square Footage	977
Acres	0.00
Year Built	2000
Type	Condo / Townhouse
Sub-Type	Lowrise Apartment
Style	Single Level Apartment
Status	Active

Community Information

Address	319 9730 174 Street
Area	Edmonton
Subdivision	Terra Losa
City	Edmonton
County	ALBERTA
Province	AB
Postal Code	T5T 6J4

Amenities

Amenities	Detectors Smoke, Exercise Room, No Animal Home, No Smoking Home, Parking-Visitor, Social Rooms, Storage-In-Suite
Parking	Underground

Interior

Interior Features	ensuite bathroom
Appliances	Dishwasher-Built-In, Dryer, Microwave Hood Fan, Refrigerator, Stove-Electric, Washer
Heating	Baseboard, Hot Water, Natural Gas
# of Stories	4
Stories	1
Has Basement	Yes
Basement	None, No Basement

Exterior

Exterior	Wood, Stucco
Exterior Features	Playground Nearby, Public Transportation, Schools, Shopping Nearby, See Remarks

Roof	Asphalt Shingles
Construction	Wood, Stucco
Foundation	Concrete Perimeter

Additional Information

Date Listed	August 8th, 2025
Days on Market	3
Zoning	Zone 20
Condo Fee	\$633

DATA IS DEEMED RELIABLE BUT IS NOT GUARANTEED ACCURATE BY THE REALTORS® ASSOCIATION OF EDMONTON. COPYRIGHT 2025 BY THE REALTORS® ASSOCIATION OF EDMONTON. ALL RIGHTS RESERVED.Trademarks are owned or controlled by the Canadian Real Estate Association (CREA) and identify real estate professionals who are members of CREA (REALTOR®, REALTORS®) and/or the quality of services they provide (MLS®, Multiple Listing Service®)

Listing information last updated on August 11th, 2025 at 4:47am MDT