

\$520,000 - 32 2320 Twp Road 540, Rural Lac Ste. Anne County

MLS® #E4452269

\$520,000

4 Bedroom, 2.50 Bathroom, 1,239 sqft

Rural on 3.76 Acres

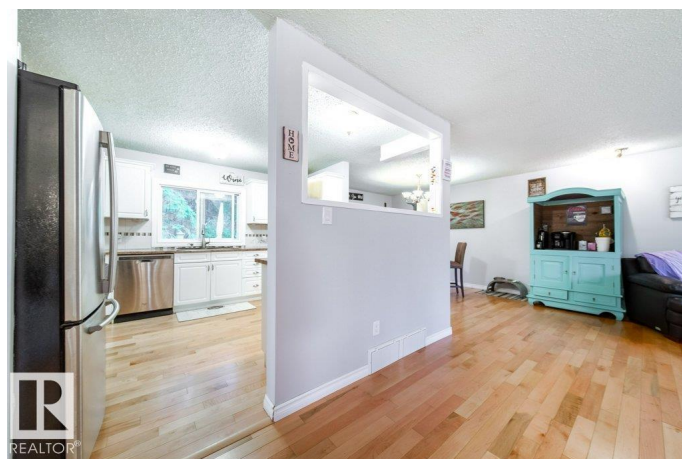
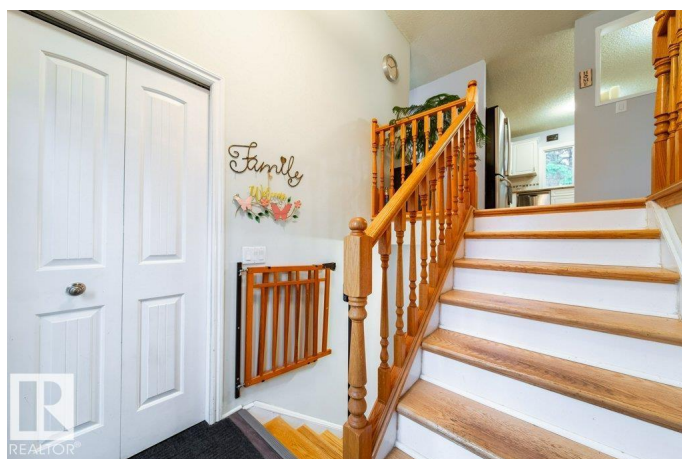
Spruce Lane Estates, Rural Lac Ste. Anne County, AB

A gorgeous tree-lined driveway welcomes you to this 1,239 sq ft walkout bi-level on 3.76 private, fenced acres â€” complete with a heated, insulated, oversized 4-car garage (50â€™ x 24â€™). Offering 4 bedrooms and 3 bathrooms, pride of ownership is evident, yet thereâ€™s still room to add your personal touch â€” a perfect fix-me-upper for the handy buyer. The spacious yard provides plenty of room for kids, pets, and toys, while the peaceful setting offers privacy and tranquility. Pavement right to the subdivision entrance makes access a breeze, just 15 minutes from Stony Plain. Move in and enjoy country living with modern comforts â€” this property is truly worth the drive!

Built in 1978

Essential Information

MLS® #	E4452269
Price	\$520,000
Bedrooms	4
Bathrooms	2.50
Full Baths	2
Half Baths	1
Square Footage	1,239



Acres	3.76
Year Built	1978
Type	Rural
Sub-Type	Detached Single Family
Style	Bi-Level
Status	Active

Community Information

Address	32 2320 Twp Road 540
Area	Rural Lac Ste. Anne County
Subdivision	Spruce Lane Estates
City	Rural Lac Ste. Anne County
County	ALBERTA
Province	AB
Postal Code	T0E 1V0

Amenities

Features	Deck, Fire Pit, Gazebo, Hot Water Natural Gas, Vinyl Windows, Walkout Basement
----------	--

Interior

Interior Features	ensuite bathroom
Heating	Forced Air-1, Natural Gas
Stories	2
Has Basement	Yes
Basement	Full, Partially Finished

Exterior

Exterior	Wood
Exterior Features	Landscaped, Schools, Shopping Nearby, Partially Fenced
Construction	Wood
Foundation	Preserved Wood

Additional Information

Date Listed	August 8th, 2025
Days on Market	7
Zoning	Zone 70

DATA IS DEEMED RELIABLE BUT IS NOT GUARANTEED ACCURATE BY THE REALTORS® ASSOCIATION OF EDMONTON. COPYRIGHT 2025 BY THE REALTORS® ASSOCIATION OF EDMONTON. ALL RIGHTS RESERVED. Trademarks are owned or controlled by the Canadian Real Estate Association (CREA) and identify real

estate professionals who are members of CREA (REALTOR®®, REALTORS®®) and/or the quality of services they provide (MLS®®, Multiple Listing Service®®)

Listing information last updated on August 14th, 2025 at 10:32pm MDT