

## \$659,900 - 3 Evergreen Place, St. Albert

MLS® #E4452560

**\$659,900**

5 Bedroom, 3.50 Bathroom, 2,117 sqft

Single Family on 0.00 Acres

Erin Ridge, St. Albert, AB

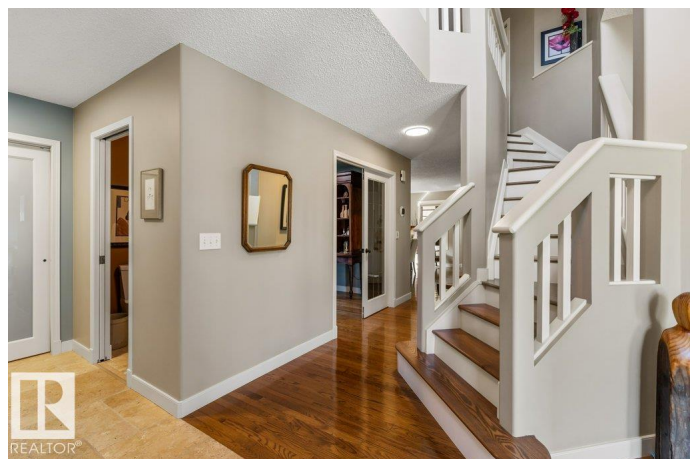
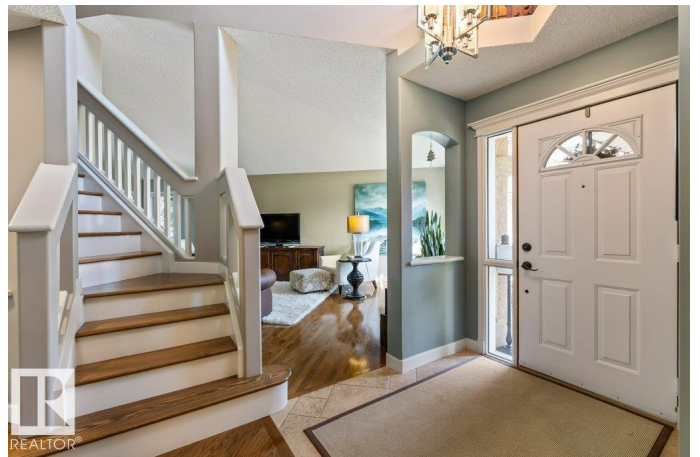
Welcome to this spacious home, nestled in a quiet cul-de-sac in Erin Ridge. Over 2,100sqft of thoughtfully designed living space, this home features 5 bdrms, 3 baths, & a triple attached garage. The main floor impresses with gorgeous oak flooring, a bright living room, dedicated office, & convenient laundry room. The kitchen is a chef's delight, showcasing updated full-height cabinetry, a large eat-up island, sleek SS appliances & a cozy window seat with surrounding shelving. A gas fireplace enhances the dining room, creating an inviting atmosphere. Upstairs, the spacious primary suite offers dual closets & a luxurious ensuite with a soaker tub & separate glass shower. Two generous bedrooms & 4-pc bathroom complete the upper level. The fully finished basement adds exceptional living space, with a large rec room, two more bedrooms, a 3-pc bathroom & ample storage. Fenced backyard, beautifully landscaped & a deck with a gazebo perfect for entertaining. Stunning family home in a sought-after location!

Built in 1993

### Essential Information

MLS® # E4452560

Price \$659,900



Bedrooms	5
Bathrooms	3.50
Full Baths	3
Half Baths	1
Square Footage	2,117
Acres	0.00
Year Built	1993
Type	Single Family
Sub-Type	Detached Single Family
Style	2 Storey
Status	Active

### Community Information

Address	3 Evergreen Place
Area	St. Albert
Subdivision	Erin Ridge
City	St. Albert
County	ALBERTA
Province	AB
Postal Code	T8N 6E2

### Amenities

Amenities	Air Conditioner, Deck, Gazebo
Parking	Triple Garage Attached

### Interior

Interior Features	ensuite bathroom
Appliances	Air Conditioning-Central, Dishwasher-Built-In, Dryer, Garage Control, Garage Opener, Hood Fan, Oven-Microwave, Refrigerator, Stove-Gas, Washer, Garage Heater
Heating	Forced Air-1, Natural Gas
Fireplace	Yes
Fireplaces	Mantel
Stories	3
Has Basement	Yes
Basement	Full, Finished

### Exterior

Exterior	Wood, Stucco
----------	--------------

Exterior Features	Cul-De-Sac, Fenced, Fruit Trees/Shrubs, Landscaped, Playground Nearby, Public Transportation, Schools, Shopping Nearby
Roof	Asphalt Shingles
Construction	Wood, Stucco
Foundation	Concrete Perimeter

**Additional Information**

Date Listed	August 12th, 2025
Days on Market	2
Zoning	Zone 24

DATA IS DEEMED RELIABLE BUT IS NOT GUARANTEED ACCURATE BY THE REALTORS® ASSOCIATION OF EDMONTON. COPYRIGHT 2025 BY THE REALTORS® ASSOCIATION OF EDMONTON. ALL RIGHTS RESERVED.Trademarks are owned or controlled by the Canadian Real Estate Association (CREA) and identify real estate professionals who are members of CREA (REALTOR®, REALTORS®) and/or the quality of services they provide (MLS®, Multiple Listing Service®)

Listing information last updated on August 14th, 2025 at 7:32am MDT