

\$156,000 - 283 Lancaster Terrace, Edmonton

MLS® #E4452700

\$156,000

2 Bedroom, 1.00 Bathroom, 963 sqft

Condo / Townhouse on 0.00 Acres

Dunluce, Edmonton, AB

Bright Spacious & Affordable describe this 962 sq/ft two bedroom, one bath, top floor corner unit with covered parking Carriage Style Townhome located in Lancaster Terrace in the community of Dunluce just steps to great amenities! This upper level home has a great entrance with a large closet, there is a galley style kitchen that is open to the living & dining room. The entire main living area with newer vinyl plank flooring has patio doors that lead to a great west facing deck with a view of the walkway. Numerous windows provide ample natural light and ventilation. The upper level gives you a well sized primary bedroom along with a large 2nd bedroom & there is newer carpet throughout upper level. The in-suite laundry is conveniently located on the upper floor. There is also a large storage room that could be utilized as a den if required. The mechanical room is situated on the main level with easy access for maintenance. The parking provides protection from the elements. Pet friendly with board approval

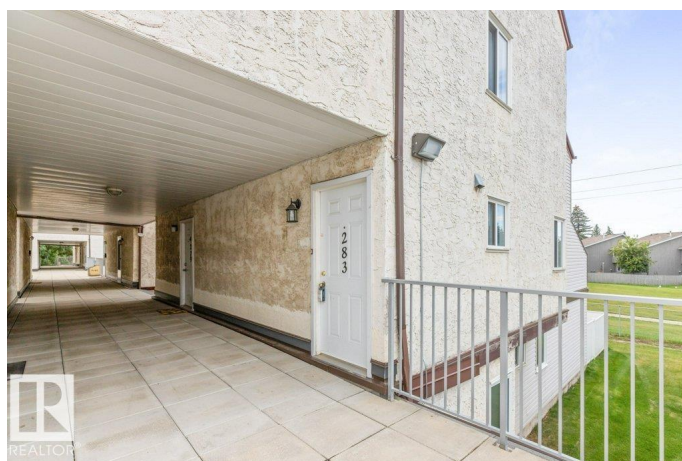
Built in 1977

Essential Information

MLS® # E4452700

Price \$156,000

Bedrooms 2



Bathrooms	1.00
Full Baths	1
Square Footage	963
Acres	0.00
Year Built	1977
Type	Condo / Townhouse
Sub-Type	Carriage
Style	2 Storey
Status	Active

Community Information

Address	283 Lancaster Terrace
Area	Edmonton
Subdivision	Dunluce
City	Edmonton
County	ALBERTA
Province	AB
Postal Code	T5X 5T6

Amenities

Amenities	No Animal Home, No Smoking Home
Parking Spaces	1
Parking	Parkade

Interior

Appliances	Dishwasher-Built-In, Dryer, Microwave Hood Fan, Refrigerator, Stove-Electric, Washer
Heating	Forced Air-1, Natural Gas
# of Stories	2
Stories	2
Has Basement	Yes
Basement	None, No Basement

Exterior

Exterior	Wood, Metal, Vinyl
Exterior Features	Backs Onto Park/Trees, Flat Site, Fruit Trees/Shrubs, Park/Reserve, Playground Nearby, Public Swimming Pool, Public Transportation, Shopping Nearby
Roof	Asphalt Shingles

Construction	Wood, Metal, Vinyl
Foundation	Concrete Perimeter

School Information

Elementary	Dunluce, St. Lucy
Middle	Rosslyn, Sir John Thompson
High	Q. Elizabeth, A. O'Leary

Additional Information

Date Listed	August 13th, 2025
Days on Market	1
Zoning	Zone 27
Condo Fee	\$374

DATA IS DEEMED RELIABLE BUT IS NOT GUARANTEED ACCURATE BY THE REALTORS® ASSOCIATION OF EDMONTON. COPYRIGHT 2025 BY THE REALTORS® ASSOCIATION OF EDMONTON. ALL RIGHTS RESERVED. Trademarks are owned or controlled by the Canadian Real Estate Association (CREA) and identify real estate professionals who are members of CREA (REALTOR®, REALTORS®) and/or the quality of services they provide (MLS®, Multiple Listing Service®)

Listing information last updated on August 14th, 2025 at 1:18pm MDT