

\$365,000 - 10615 149 Street, Edmonton

MLS® #E4452738

\$365,000

4 Bedroom, 2.00 Bathroom, 984 sqft

Single Family on 0.00 Acres

Grovenor, Edmonton, AB

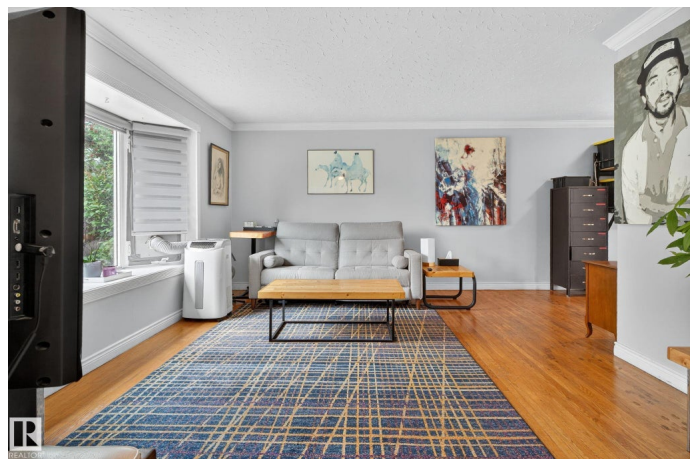
Situated in one of Edmonton's most sought-after central communities and only 3 blocks away from the Future West Valley Line, this 4-bedroom, 2-bathroom home is perfect for investors, developers, or a young family eager to put down roots in a vibrant neighborhood. Bursting with original charm and character, this property offers endless potential for someone ready to add their own touch. Enjoy a spacious layout with a bright dining room that opens to a huge deck, ideal for entertaining. The very large backyard is perfect for kids, pets, or future development, and comes complete with a single detached garage. This home features original oak hardwood floors throughout the main floor, newer shingles, and updated windows. Located within easy walking distance to top-rated schools, shopping, parks, and public transit—this is central living at its best. Whether you're looking to renovate and make it your own or explore redevelopment potential, this property is all about location, lifestyle, and opportunity.

Built in 1955

Essential Information

MLS® # E4452738

Price \$365,000



Bedrooms	4
Bathrooms	2.00
Full Baths	2
Square Footage	984
Acres	0.00
Year Built	1955
Type	Single Family
Sub-Type	Detached Single Family
Style	Bungalow
Status	Active

Community Information

Address	10615 149 Street
Area	Edmonton
Subdivision	Grovenor
City	Edmonton
County	ALBERTA
Province	AB
Postal Code	T5P 1L9

Amenities

Amenities	Deck, No Smoking Home
Parking Spaces	3
Parking	Single Garage Detached

Interior

Appliances	Dishwasher-Built-In, Dryer, Refrigerator, Stove-Electric, Washer
Heating	Forced Air-1, Natural Gas
Stories	2
Has Basement	Yes
Basement	Full, Finished

Exterior

Exterior	Wood, Stucco
Exterior Features	Back Lane, Playground Nearby, Public Transportation, Schools, Shopping Nearby, Treed Lot
Lot Description	131ft x 48ft
Roof	Asphalt Shingles
Construction	Wood, Stucco

Foundation Concrete Perimeter

School Information

Elementary Grovenor Elementary
Middle West Minister Junior High
High Ross Shepherd Senior

Additional Information

Date Listed August 13th, 2025
Days on Market 1
Zoning Zone 21

DATA IS DEEMED RELIABLE BUT IS NOT GUARANTEED ACCURATE BY THE REALTORS® ASSOCIATION OF EDMONTON. COPYRIGHT 2025 BY THE REALTORS® ASSOCIATION OF EDMONTON. ALL RIGHTS RESERVED.Trademarks are owned or controlled by the Canadian Real Estate Association (CREA) and identify real estate professionals who are members of CREA (REALTOR®, REALTORS®) and/or the quality of services they provide (MLS®, Multiple Listing Service®)
Listing information last updated on August 14th, 2025 at 5:17pm MDT