

\$639,000 - 8321 Shaske Crescent, Edmonton

MLS® #E4452937

\$639,000

4 Bedroom, 3.50 Bathroom, 1,861 sqft

Single Family on 0.00 Acres

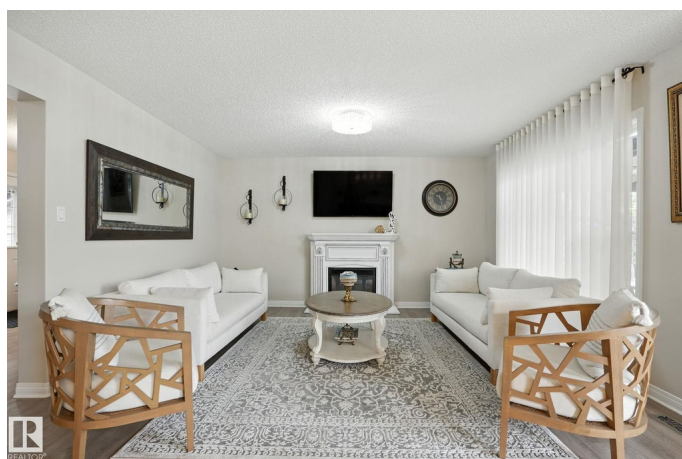
South Terwillegar, Edmonton, AB

Beautifully maintained and recently remodeled home in the community of Terwillegar! Offering over 2,400 sq. ft. of living space, this 4-bedroom gem features a brand new kitchen with quality finishes and nearly new appliances. The fully finished basement, completed with all permits, adds valuable living space. Enjoy year-round comfort with a brand new A/C. The private, fully landscaped backyard backs directly onto a park and is just steps from a scenic pond. Located in one of Edmonton's most desirable neighborhoods, known for top-ranking schools, this home combines style, comfort, and convenience in a prime location, close to playground and spray park. Move-in ready and perfect for families looking to settle in a vibrant, welcoming community.

Built in 2006

Essential Information

MLS® #	E4452937
Price	\$639,000
Bedrooms	4
Bathrooms	3.50
Full Baths	3
Half Baths	1
Square Footage	1,861
Acres	0.00



Year Built	2006
Type	Single Family
Sub-Type	Detached Single Family
Style	2 Storey
Status	Active

Community Information

Address	8321 Shaske Crescent
Area	Edmonton
Subdivision	South Terwillegar
City	Edmonton
County	ALBERTA
Province	AB
Postal Code	T6R 3V8

Amenities

Amenities	See Remarks
Parking	Double Garage Attached

Interior

Interior Features	ensuite bathroom
Appliances	Air Conditioning-Central, Dishwasher-Built-In, Dryer, Microwave Hood Fan, Refrigerator, Storage Shed, Stove-Electric, Washer
Heating	Forced Air-1, Natural Gas
Stories	3
Has Basement	Yes
Basement	Full, Finished

Exterior

Exterior	Wood, Vinyl
Exterior Features	See Remarks
Roof	Asphalt Shingles
Construction	Wood, Vinyl
Foundation	Concrete Perimeter

Additional Information

Date Listed	August 14th, 2025
Days on Market	1
Zoning	Zone 14

DATA IS DEEMED RELIABLE BUT IS NOT GUARANTEED ACCURATE BY THE REALTORS® ASSOCIATION OF EDMONTON. COPYRIGHT 2025 BY THE REALTORS® ASSOCIATION OF EDMONTON. ALL RIGHTS RESERVED.Trademarks are owned or controlled by the Canadian Real Estate Association (CREA) and identify real estate professionals who are members of CREA (REALTOR®, REALTORS®) and/or the quality of services they provide (MLS®, Multiple Listing Service®)

Listing information last updated on August 15th, 2025 at 1:18pm MDT