

\$429,900 - 4314 52 Street, Wetaskiwin

MLS® #E4457526

\$429,900

3 Bedroom, 1.50 Bathroom, 1,876 sqft

Single Family on 0.00 Acres

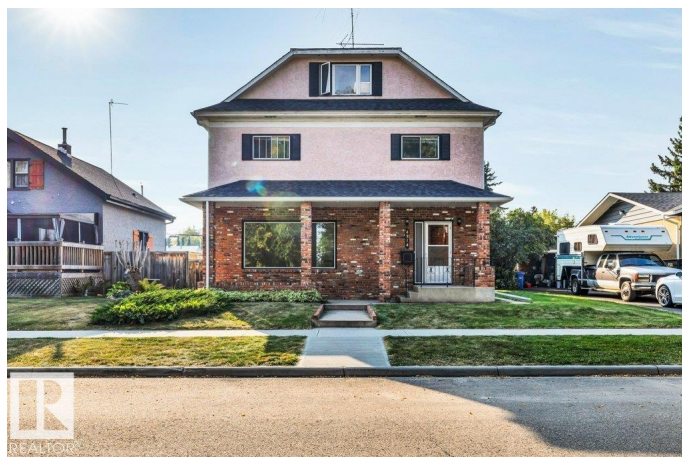
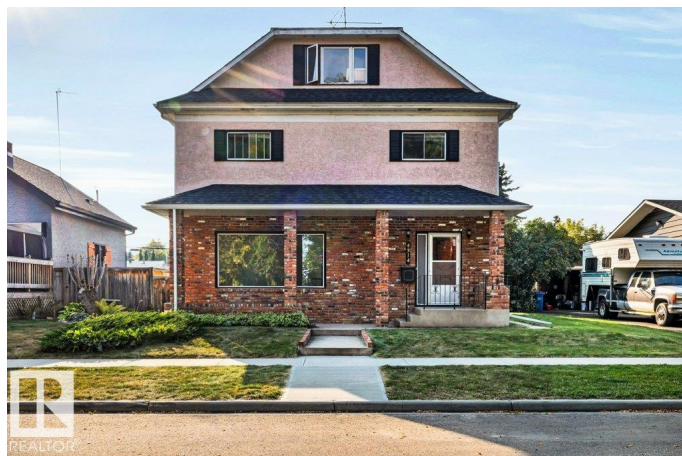
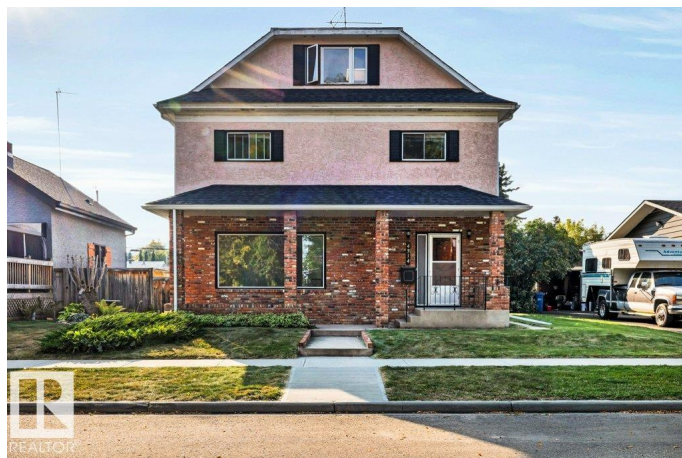
Parkdale (Wetaskiwin), Wetaskiwin, AB

Immaculate 2.5-Storey Character Home with Huge Heated Shop, Custom Finishes & Loft with Wet Bar! This well-cared-for 2.5-storey home offers the perfect blend of craftsmanship, space, and functionality. From the custom black walnut cabinets to the expansive walk-out deck, every detail reflects quality and pride of ownership. Three spacious bedrooms with great natural light, 2 baths, huge open basement. Huge heated shop approx. 40'x23' with 10' and 8' doors ideal for hobbyists, mechanics, tradespeople, or extra storage. All located in mature area of Wetaskiwin.

Built in 1906

Essential Information

MLS® #	E4457526
Price	\$429,900
Bedrooms	3
Bathrooms	1.50
Full Baths	1
Half Baths	1
Square Footage	1,876
Acres	0.00
Year Built	1906
Type	Single Family
Sub-Type	Detached Single Family



Style	2 and Half Storey
Status	Active

Community Information

Address	4314 52 Street
Area	Wetaskiwin
Subdivision	Parkdale (Wetaskiwin)
City	Wetaskiwin
County	ALBERTA
Province	AB
Postal Code	T9A 1N4

Amenities

Amenities	Bar, Deck, No Animal Home, No Smoking Home, R.V. Storage, Skylight, Workshop, Rooftop Deck/Patio
Parking Spaces	6
Parking	Front/Rear Drive Access, Heated, Over Sized, RV Parking, Shop

Interior

Appliances	Dryer, Fan-Ceiling, Garage Control, Garage Opener, Microwave Hood Fan, Refrigerator, Storage Shed, Stove-Electric, Washer, Window Coverings, Garage Heater
Heating	Forced Air-1, Natural Gas
Fireplace	Yes
Fireplaces	Insert
Stories	3
Has Basement	Yes
Basement	Full, Unfinished

Exterior

Exterior	Wood, Brick, Stucco, Hardie Board Siding
Exterior Features	Back Lane, Schools, Partially Fenced
Roof	Asphalt Shingles
Construction	Wood, Brick, Stucco, Hardie Board Siding
Foundation	Block

Additional Information

Date Listed	September 10th, 2025
Days on Market	12
Zoning	Zone 80

DATA IS DEEMED RELIABLE BUT IS NOT GUARANTEED ACCURATE BY THE REALTORS® ASSOCIATION OF EDMONTON. COPYRIGHT 2025 BY THE REALTORS® ASSOCIATION OF EDMONTON. ALL RIGHTS RESERVED.Trademarks are owned or controlled by the Canadian Real Estate Association (CREA) and identify real estate professionals who are members of CREA (REALTOR®, REALTORS®) and/or the quality of services they provide (MLS®, Multiple Listing Service®)

Listing information last updated on September 23rd, 2025 at 7:32am MDT