

\$499,999 - 11907 164 Avenue, Edmonton

MLS® #E4461287

\$499,999

4 Bedroom, 3.00 Bathroom, 1,773 sqft

Single Family on 0.00 Acres

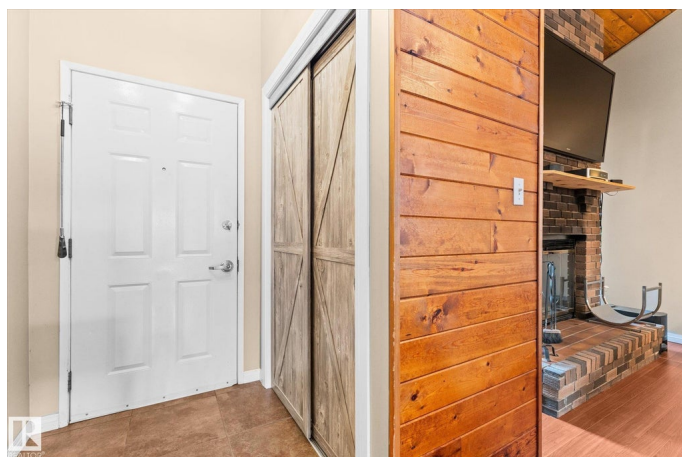
Dunluce, Edmonton, AB

Beautifully Maintained 4-Bedroom Home in Dunluce! Welcome to this 1,800 sq ft gem close to schools, parks, shopping, and major roadways for easy access anywhere in the city. This unique and well kept home offers 4 spacious bedrooms and 3 full bathrooms, perfect for families of all sizes. Youâ€™ll love the bright and open layout with high ceilings and a cozy wood-burning fireplace creating a warm and inviting atmosphere. The kitchen and living areas flow nicely, ideal for everyday living and entertaining. The partially finished basement includes a bedroom, bathroom, and large living area, already drywalled and mostly painted, just waiting for your finishing touches! Updates include shingles (2020), furnace (2020), hot water tank (2022), skylights (2020), and fence (2020). Enjoy A/C, central vac, and a heated attached double garage with 220V. Large fenced yard on a generous lot. Unique design and excellent condition throughout!

Built in 1981

Essential Information

MLS® #	E4461287
Price	\$499,999
Bedrooms	4
Bathrooms	3.00
Full Baths	3



Square Footage	1,773
Acres	0.00
Year Built	1981
Type	Single Family
Sub-Type	Detached Single Family
Style	2 Storey
Status	Active

Community Information

Address	11907 164 Avenue
Area	Edmonton
Subdivision	Dunluce
City	Edmonton
County	ALBERTA
Province	AB
Postal Code	T5X 5C1

Amenities

Amenities	Air Conditioner, Ceiling 10 ft., Deck, No Smoking Home, Skylight, Vaulted Ceiling, Natural Gas BBQ Hookup
Parking	Double Garage Attached

Interior

Appliances	Dishwasher-Built-In, Dryer, Garage Opener, Oven-Microwave, Refrigerator, Stove-Electric, Washer, Window Coverings
Heating	Forced Air-1, Natural Gas
Fireplace	Yes
Fireplaces	Brick Facing, Glass Door
Stories	3
Has Basement	Yes
Basement	Full, Partially Finished

Exterior

Exterior	Wood, Brick, See Remarks
Exterior Features	Fenced, Public Transportation, Schools, Shopping Nearby
Roof	Asphalt Shingles
Construction	Wood, Brick, See Remarks
Foundation	Concrete Perimeter

Additional Information

Date Listed October 8th, 2025

Days on Market 1

Zoning Zone 27

DATA IS DEEMED RELIABLE BUT IS NOT GUARANTEED ACCURATE BY THE REALTORS® ASSOCIATION OF EDMONTON. COPYRIGHT 2025 BY THE REALTORS® ASSOCIATION OF EDMONTON. ALL RIGHTS RESERVED. Trademarks are owned or controlled by the Canadian Real Estate Association (CREA) and identify real estate professionals who are members of CREA (REALTOR®, REALTORS®) and/or the quality of services they provide (MLS®, Multiple Listing Service®)

Listing information last updated on October 9th, 2025 at 3:32am MDT