

\$519,900 - 2626 Taylor Green, Edmonton

MLS® #E4461369

\$519,900

4 Bedroom, 2.50 Bathroom, 1,831 sqft

Single Family on 0.00 Acres

Terwillegar Towne, Edmonton, AB

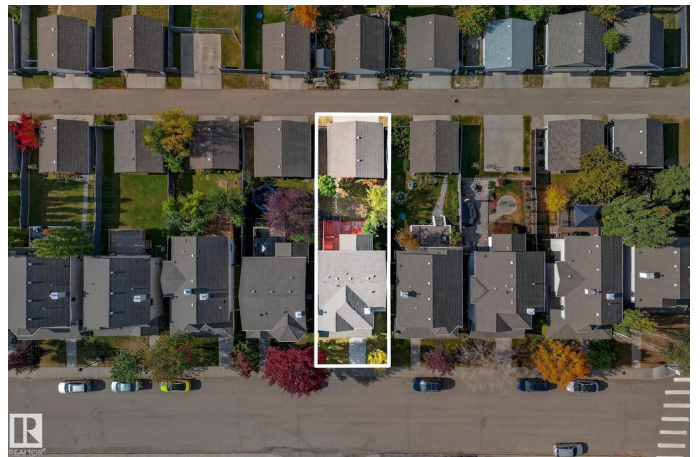
Great location in the great neighborhood of Terwillegar Towne. Let's cut to the chase.

***** Features: ** RIGHT across Monsignor William Irwin Catholic School & Esther Starkman School. ** Gas fireplace, Air conditioning, & Vaulted high ceiling for dining area. ** Large east-facing veranda, & Oversized detached doubled garage (23 feet x 23 feet). ** 3 + 1 bedrooms. ** 2.5 bathrooms Plus a bathroom rough-in at basement. ** Quick and easy access to the University of Alberta, Community Rec Centre, LRT, Top-rated schools, Anthony Henday Drive, Shopping centres, Walking trails, Ravine & Nature reserve. ***** Home is what you make it! Move in & Enjoy!!

Built in 2004

Essential Information

MLS® #	E4461369
Price	\$519,900
Bedrooms	4
Bathrooms	2.50
Full Baths	2
Half Baths	1
Square Footage	1,831
Acres	0.00
Year Built	2004



Type	Single Family
Sub-Type	Detached Single Family
Style	2 Storey
Status	Active

Community Information

Address	2626 Taylor Green
Area	Edmonton
Subdivision	Terwillegar Towne
City	Edmonton
County	ALBERTA
Province	AB
Postal Code	T6R 3N8

Amenities

Amenities	Air Conditioner, Vaulted Ceiling
Parking Spaces	4
Parking	Double Garage Detached

Interior

Interior Features	ensuite bathroom
Appliances	Air Conditioning-Central, Dishwasher-Built-In, Dryer, Garage Control, Garage Opener, Refrigerator, Stove-Electric, Washer
Heating	Forced Air-1, Natural Gas
Stories	3
Has Basement	Yes
Basement	Full, Finished

Exterior

Exterior	Wood, Vinyl
Exterior Features	Playground Nearby, Schools, See Remarks
Roof	Asphalt Shingles
Construction	Wood, Vinyl
Foundation	Concrete Perimeter

Additional Information

Date Listed	October 8th, 2025
Days on Market	1
Zoning	Zone 14

HOA Fees 200

HOA Fees Freq. Annually

DATA IS DEEMED RELIABLE BUT IS NOT GUARANTEED ACCURATE BY THE REALTORS® ASSOCIATION OF EDMONTON. COPYRIGHT 2025 BY THE REALTORS® ASSOCIATION OF EDMONTON. ALL RIGHTS RESERVED. Trademarks are owned or controlled by the Canadian Real Estate Association (CREA) and identify real estate professionals who are members of CREA (REALTOR®, REALTORS®) and/or the quality of services they provide (MLS®, Multiple Listing Service®)

Listing information last updated on October 9th, 2025 at 2:02am MDT