

\$599,000 - 13919 102 Avenue, Edmonton

MLS® #E4461591

\$599,000

4 Bedroom, 2.00 Bathroom, 1,295 sqft

Single Family on 0.00 Acres

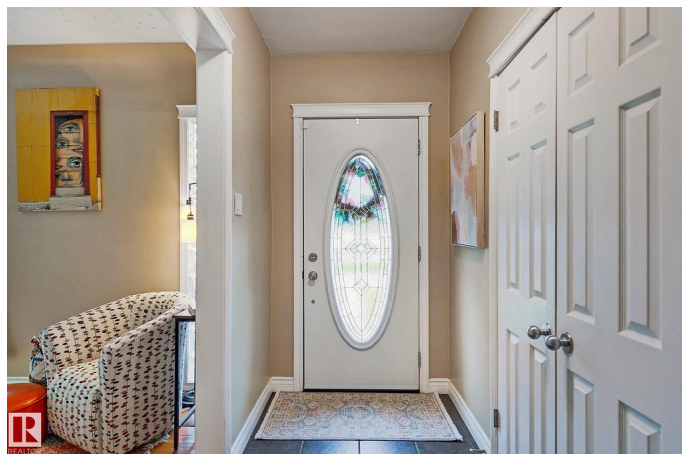
Glenora, Edmonton, AB

Location, location! Nestled on a service road just minutes to Downtown; this beautifully maintained GLENORA home has been extensively updated & is perfect for the young professional(s) or young family. Beautiful hardwood, granite counters and SS appliances embrace almost 1300sqft of convenient living noting 3+1 Bedrooms and 2 full baths. Fully finished basement and decadent SOUTH facing backyard are on a rare 7800sqft lot with massive 95ft frontage and 82ft depth. Build your dream home or purchase with the home next door for a whopping 1225m2 site. Oversized double HEATED garage! Private backyard! Rent and hold; as the city transforms for potential future opportunities or live in a location boasting proximity to all things city! Nearby walking and bike trails, stunning River Valley in addition to the trendy shops and restaurants on 142St and the glorious amenities across the street! Donâ€™t miss this opportunity!

Built in 1951

Essential Information

MLS® #	E4461591
Price	\$599,000
Lease Rate	\$29
Bedrooms	4



Bathrooms	2.00
Full Baths	2
Square Footage	1,295
Acres	0.00
Year Built	1951
Type	Single Family
Sub-Type	Detached Single Family
Style	Bungalow
Status	Active

Community Information

Address	13919 102 Avenue
Area	Edmonton
Subdivision	Glenora
City	Edmonton
County	ALBERTA
Province	AB
Postal Code	T5N 0P5

Amenities

Amenities	On Street Parking, Deck, Hot Water Natural Gas, Parking-Extra
Parking	Double Garage Detached, Heated

Interior

Appliances	Dishwasher-Built-In, Dryer, Garage Control, Garage Opener, Microwave Hood Fan, Refrigerator, Storage Shed, Stove-Electric, Washer, Garage Heater
Heating	Forced Air-1, Natural Gas
Fireplace	Yes
Fireplaces	Tile Surround
Stories	2
Has Basement	Yes
Basement	Full, Finished

Exterior

Exterior	Wood, Vinyl
Exterior Features	Back Lane, Fenced, Landscaped, Low Maintenance Landscape, Public Transportation, Schools, Shopping Nearby, See Remarks
Lot Description	95x85

Roof	Asphalt Shingles
Construction	Wood, Vinyl
Foundation	Concrete Perimeter

Additional Information

Date Listed	October 8th, 2025
Days on Market	2
Zoning	Zone 11

DATA IS DEEMED RELIABLE BUT IS NOT GUARANTEED ACCURATE BY THE REALTORS® ASSOCIATION OF EDMONTON. COPYRIGHT 2025 BY THE REALTORS® ASSOCIATION OF EDMONTON. ALL RIGHTS RESERVED.Trademarks are owned or controlled by the Canadian Real Estate Association (CREA) and identify real estate professionals who are members of CREA (REALTOR®, REALTORS®) and/or the quality of services they provide (MLS®, Multiple Listing Service®)

Listing information last updated on October 10th, 2025 at 9:17am MDT