

Courtesy Of Linnette T Peeters Of Peace Hills Realty

## **\$169,000 - 4321 53a Street, Wetaskiwin**

MLS® #E4464790

### **\$169,000**

2 Bedroom, 1.50 Bathroom, 1,155 sqft

Single Family on 0.00 Acres

Wetaskiwin, Wetaskiwin, AB

Affordable 2 bedroom family home. Offering a spacious mature lot with plenty of space for parking. Walking distance to Queen Elizabeth, Parkdale School & shopping. This home has had substantial renovations in 2024 & 2025: new deck, updated plumbing & electrical, updated kitchen & granite countertops, new flooring throughout, new skylight, new shingles, all new plumbing fixtures, new kitchen appliances, new dishwasher, new washer & dryer, all new light fixtures, new waterproof shower & a new hot water heater. Home comes with 5 appliances, garden area to grow your own food. This spectacular home is move in ready, beautifully updated & offering a quick possession.

Built in 1922

### **Essential Information**

MLS® #	E4464790
Price	\$169,000
Bedrooms	2
Bathrooms	1.50
Full Baths	1
Half Baths	1
Square Footage	1,155
Acres	0.00
Year Built	1922



Type	Single Family
Sub-Type	Detached Single Family
Style	2 Storey
Status	Active

### **Community Information**

Address	4321 53a Street
Area	Wetaskiwin
Subdivision	Wetaskiwin
City	Wetaskiwin
County	ALBERTA
Province	AB
Postal Code	T9A 1S3

### **Amenities**

Amenities	No Smoking Home
Parking	No Garage

### **Interior**

Appliances	Dishwasher-Built-In, Dryer, Refrigerator, Storage Shed, Stove-Electric, Washer, Window Coverings
Heating	Forced Air-1, Natural Gas
Stories	2
Has Basement	Yes
Basement	See Remarks, No Basement

### **Exterior**

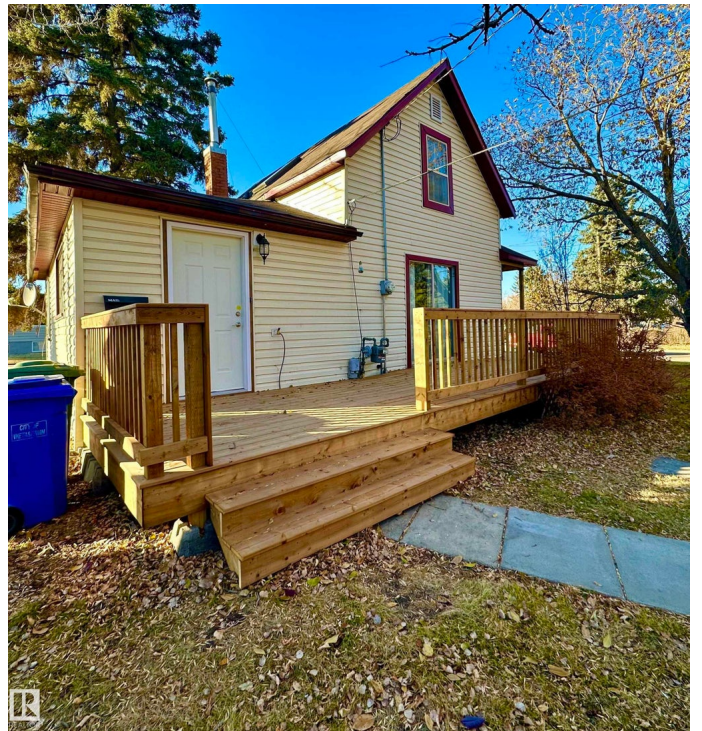
Exterior	Wood, Vinyl
Exterior Features	Corner Lot, Flat Site, Landscaped, Level Land, Not Fenced, Playground Nearby, Schools, Shopping Nearby, See Remarks
Roof	Asphalt Shingles
Construction	Wood, Vinyl
Foundation	See Remarks

### **School Information**

Elementary	Parkdale Elementary
Middle	Queen Elizabeth
High	Wetaskiwin Composite

### **Additional Information**

Date Listed November 5th, 2025  
Days on Market 2  
Zoning Zone 80



DATA IS DEEMED RELIABLE BUT IS NOT GUARANTEED ACCURATE BY THE REALTORS® ASSOCIATION OF EDMONTON. COPYRIGHT 2025 BY THE REALTORS® ASSOCIATION OF EDMONTON. ALL RIGHTS RESERVED. Trademarks are owned or controlled by the Canadian Real Estate Association (CREA) and identify real estate professionals who are members of CREA (REALTOR®, REALTORS®) and/or the quality of services they provide (MLS®, Multiple Listing Service®)

Listing information last updated on November 7th, 2025 at 8:47am MST